

自卷管成型机，编织带自卷机

自卷管成型机又称编织带自卷机，该设备工作原理就是把编织带通过设备的加热---冷却---塑型。从而实现编织管自卷定型。产品为自卷管。

加热部分由加热炉加热模具，温度可高达 500℃。

动力部分由设备尾部的牵引机输送动力。

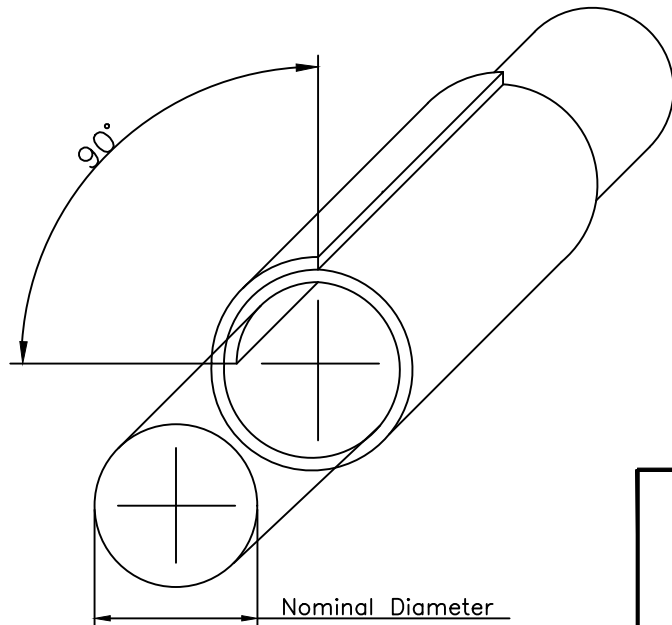
冷却部分由高速散热风扇组成。

模具部分，设备自带由 3 套模具。如需增加模具数量，可安装客户要求非标定制。

DIMENSIONS

FEDERAL MOGUL Part number	FEDERAL MOGUL Product name	Nominal diameter in mm*	Overlap on mandrel of nominal diameter***	Thickness in mm
2425000503**	TWISTTUBE 2420F 5-0/-	5	90 ^{+40°} _{-25°}	0.60 ± 0.15
2425000803**	TWISTTUBE 2420F 8-0/-	8	90 ^{+40°} _{-25°}	0.60 ± 0.15
2425001003**	TWISTTUBE 2420F 10-0/-	10	90 ^{+40°} _{-25°}	0.60 ± 0.15
2425001303**	TWISTTUBE 2420F 13-0/-	13	90 ^{+40°} _{-25°}	0.60 ± 0.15
2425001603**	TWISTTUBE 2420F 16-0/-	16	90 ^{+40°} _{-25°}	0.60 ± 0.15
2425001903**	TWISTTUBE 2420F 19-0/-	19	90 ± 20°	0.60 ± 0.15
2425002503**	TWISTTUBE 2420F 25-0/-	25	90 ± 20°	0.60 ± 0.15
2425002903**	TWISTTUBE 2420F 29-0/-	29	90 ± 20°	0.60 ± 0.15
2425003203**	TWISTTUBE 2420F 32-0/-	32	90 ± 10°	0.60 ± 0.15
2425003803**	TWISTTUBE 2420F 38-0/-	38	90 ± 10°	0.60 ± 0.15

*= The nominal diameter describes the maximum application diameter
 **= MXXXXH: for cut lengths
 **= S or SS for bulk product
 ***= Maximum overlap = Indicative value



HOT CUTTING TOLERANCES

Cut Length	Tolerance
50 - 300 mm	± 4 mm
301 - 500 mm	± 5 mm
501 - 820 mm	± 10 mm
821 - 1000 mm	± 15 mm
1001 - 1500 mm	± 20 mm
1501 - 2000 mm	± 25 mm

REV	DESCRIPTION	DATE	BY
A	INITIAL RELEASE (ECR 13076 plan 50521)	03/04/14	AF
B	Update hot cut tolerance (ECR 13135)	14/08/14	PAM
C	Update name (ECR 13255)	03/02/16	AK
D	Tolerance for cut length >1501mm (ECR14624)	24/08/20	RV
E	Dimension table modification (ECR14635)	03/09/20	RV

PROPERTIES

WORKING TEMPERATURE	RAW MATERIALS	Color
From -50°C to +150°C	9024099: PET multifilament 9024112: PET Monofilament	Black

MAIN APPLICATIONS

TWISTTUBE® 2420F is a self-wrapping sleeve designed to provide abrasion protection and acoustical noise suppression. its self-wrapping design allows for quick and easy bundling of wire and cable assemblies

Total of product special characteristics: 0

GEOMETRIC DIMENSIONS & TOLERANCING IN ACCORDANCE WITH ASME Y14.5M -1994 ANY CHANGE IN PROCESS OR COMPOSITION REQUIRES PRIOR ENGINEERING APPROVAL MONITOR PER APPROVED CONTROL PLAN INITIAL LAYOUT WITHIN SPEC. ONGOING CONTROL PER APPROVED CONTROL PLAN. INITIAL CAPABILITY 30 CONSECUTIVE PCS. Cpk > 1.67 ONGOING CONTROL USE SPC PER AIAG GUIDELINES. INITIAL CAPABILITY: 100 CONSECUTIVE PCS. Cpk > 1.67.	PROGRAM MANAGER Amel FATHALLAH	DATE 03/09/20
	DRAWN Romain VERA	DATE 03/09/20
	PRODUCT MANAGER Isabelle FRADIN	DATE 03/09/20
	ENGINEERING Sophie PINCELOUP	DATE 03/09/20
	Quality Ludovic AUCOUTURIER	DATE 03/09/20
	TECHNICAL SERVICE Mélanie VERONNEAU	DATE 03/09/20

METRIC DRAWING	
FEDERAL-MOGUL SYSTEMS PROTECTION	
MANUF. OF BENTLEYHARRIS® PROTECTION PRODUCTS	
TITLE: TWISTTUBE® 2420F	69, rue Henri Laroche 60800 CREPY EN VALOIS, FRANCE TELEPHONE: 03 44 94 48 48 SIZE A3 REVISION E
DRAWING NO: 50856	
SCALE: NTS	
SHEET 1 OF 1	