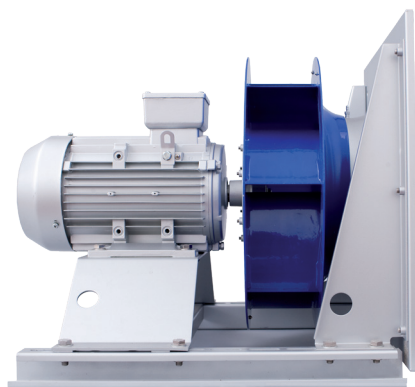


Plug fan, ventilation

ER80C, GR80C

Motor IE2

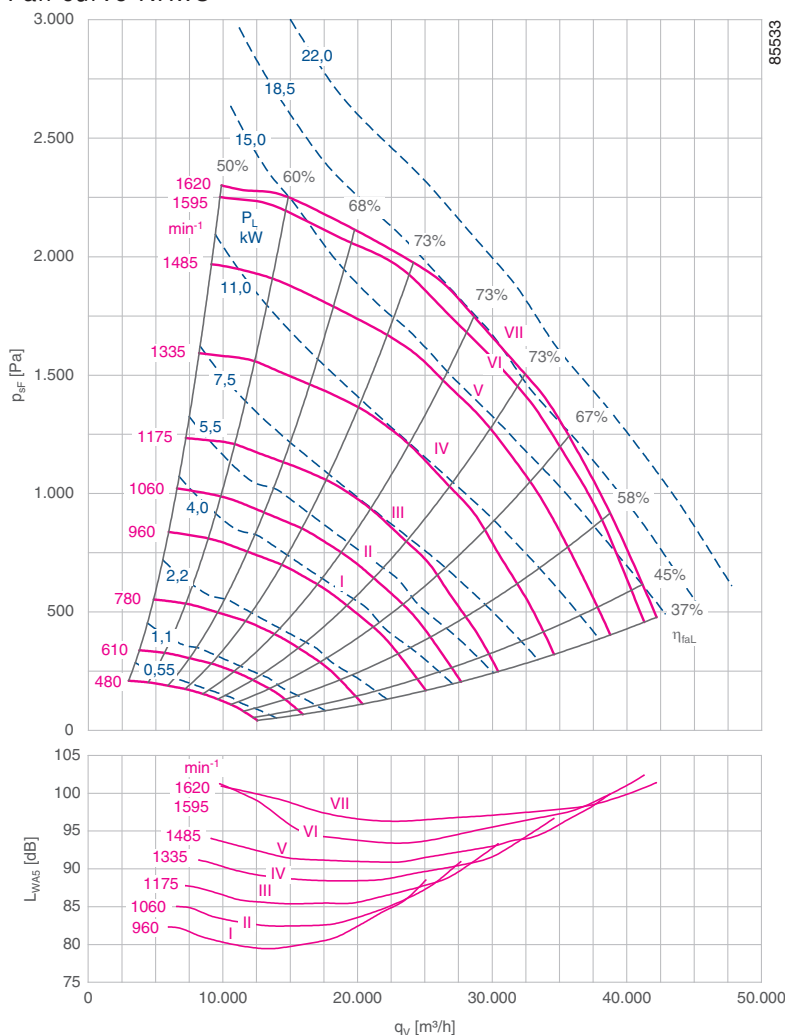


Description

- Number of blades: 7
- Max. permissible media temperature: 40°C
- Min. permissible media temperature: -20°C
- Motor protection: PTC thermistor (PTC)
- Impeller: Welded sheet steel coated / painted in RAL 5002 (ultramarine blue)
- ER-plug fan made as rugged bolted construction built with galvanised sheet steel
- Inlet ring for optimum impeller inflow with measurement device for determining flow rate

- Dimensions of explosion protected design Page 88
- Inlet guard Page 109
- Rubber dampers Page 109
- Spring vibration damper Page 109
- Flexible air intakes Page 110
- Frequency inverter Icontrol Page 92
- Sensors Page 96

Fan curve RH..C



Technical data

Rated power P_N kW	Type ER / GR*	Motor size	Fan curve no.	Rated speed n_N min^{-1}	Rated current I_N A	Max. speed n_{max} min^{-1}	Max. frequency f_{max} Hz
4.00	ER80C-6DN.H7.1R	132M	I	960	8.10	960	50
5.50	ER80C-6DN.H7.1R	132M	II	960	11.80	1060	55
7.50	ER80C-6DN.I7.1R	160M	III	970	15.80	1175	61
11.00	ER80C-6DN.K7.1R	160L	IV	970	22.60	1335	69
15.00	ER80C-4DN.K7.1R	160L	V	1460	27.70	1485	51
18.50	ER80C-4DN.L7.1R	180M	VI	1470	33.60	1595	54
22.00	ER80C-4DN.M7.1R	180L	VII	1470	39.80	1620	55

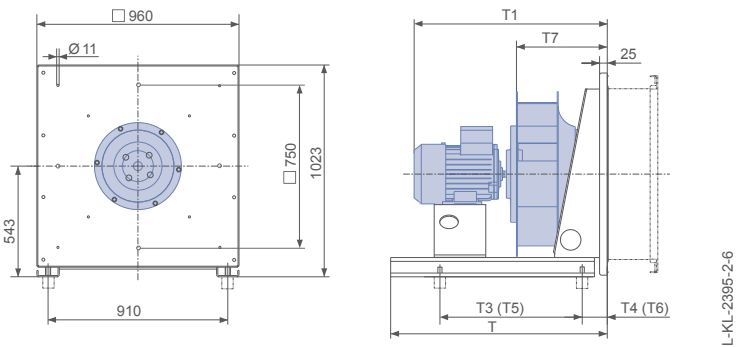
* Identical performance data for ER..C and GR..C

Basic version ER				Basic version GR			
Rated power				Installation position			
P_N kW	Type ER..C	Article no. ER..C	\bar{h} max.	Installation position Vu	Article no. GR..C	Installation position Vo	\bar{h} max.
4.00	ER80C-6DN.H7.1R	130545/0F01	173	GR80C-6DN.H5.1R	113817/U01	113817/O01	198
5.50	ER80C-6DN.H7.1R	130546/0F01	182	GR80C-6DN.H5.1R	113818/U01	113818/O01	207
7.50	ER80C-6DN.I7.1R	130547/0F01	263	GR80C-6DN.I5.1R	113819/U01	113819/O01	284
11.00	ER80C-6DN.K7.1R	130548/0F01	277	GR80C-6DN.K5.1R	113820/U01	113820/O01	298
15.00	ER80C-4DN.K7.1R	130549/0F01	263	GR80C-4DN.K5.1R	113821/U01	113821/O01	284
18.50	ER80C-4DN.L7.1R	130550/0F01	300	GR80C-4DN.L5.1R	113822/U01	113822/O01	319
22.00	ER80C-4DN.M7.1R	130551/0F01	314	GR80C-4DN.M5.1R	113823/U01	113823/O01	333



Dimensions in mm

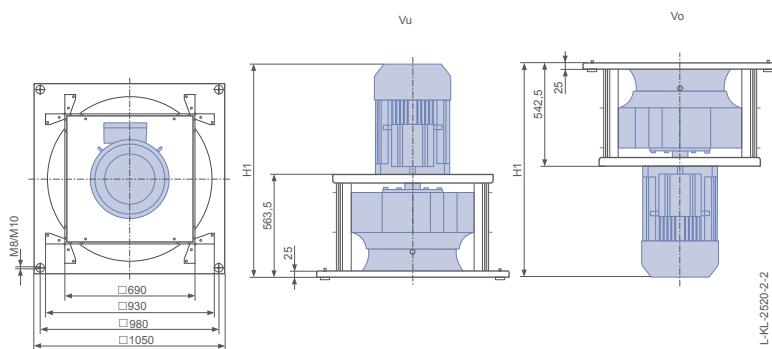
Plug fan ER in installation position H



Rated power	Type	T	T1	T3	T4	T5	T6	T7	Spring vibration damper	Rubber dampers
P_N kW		mm	mm	mm	mm	mm	mm	mm		
4.00	ER80C-6DN.H7.1R	885	956	738	92	708	92	487	SD 4	40x40 / 40
5.50	ER80C-6DN.H7.1R	885	956	752	98	742	88	487	SD 4	40x40 / 40
7.50	ER80C-6DN.I7.1R	1045	1028	882	128	766	174	487	SD 4	50x50 / 55
11.00	ER80C-6DN.K7.1R	1045	1083	842	168	846	154	487	SD 4	50x50 / 55
15.00	ER80C-4DN.K7.1R	1045	1083	860	150	784	176	487	SD 5	50x50 / 55
18.50	ER80C-4DN.L7.1R	1045	1153	804	206	826	184	487	SD 5	50x50 / 55
22.00	ER80C-4DN.M7.1R	1045	1153	768	242	790	220	487	SD 5	50x50 / 55

T5 and T6 apply to attachment of Ziehl-Abegg intake flanges.

Ventilation unit GR in installation position Vu/Vo

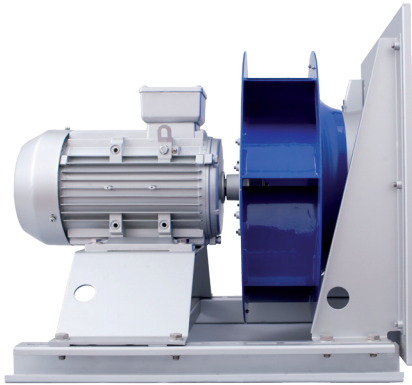


Rated power	Type	Installation position	
		Vu	Vo
P_N kW		H1 mm	H1 mm
4.00	GR80C-6DN.H5.1R	952	931
5.50	GR80C-6DN.H5.1R	952	931
7.50	GR80C-6DN.I5.1R	1024	1003
11.00	GR80C-6DN.K5.1R	1079	1058
15.00	GR80C-4DN.K5.1R	1079	1058
18.50	GR80C-4DN.L5.1R	1109	1088
22.00	GR80C-4DN.M5.1R	1149	1128

Plug fan, ventilation

ER90C, GR90C

Motor IE2

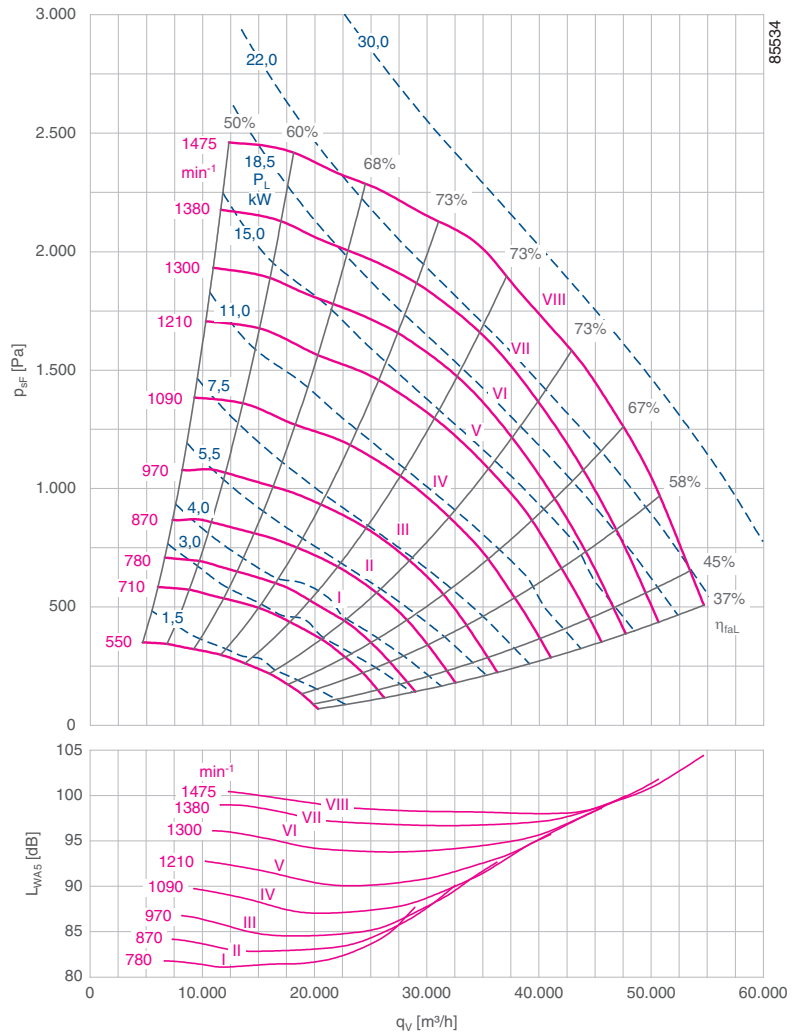


Description

- Number of blades: 7
- Max. permissible media temperature: 40°C
- Min. permissible media temperature: -20°C
- Motor protection: PTC thermistor (PTC)
- Impeller: Welded sheet steel coated / painted in RAL 5002 (ultramarine blue)
- ER-plug fan made as rugged bolted construction built with galvanised sheet steel
- Inlet ring for optimum impeller inflow with measurement device for determining flow rate

- Dimensions of explosion protected design Page 88
- Inlet guard Page 109
- Rubber dampers Page 109
- Spring vibration damper Page 109
- Flexible air intakes Page 110
- Frequency inverter Icontrol Page 92
- Sensors Page 96

Fan curve RH..C



Technical data

Rated power P_N kW	Type ER / GR*	Motor size	Fan curve no.	Rated speed n_N min^{-1}	Rated current I_N A	Max. speed n_{max} min^{-1}	Max. frequency f_{max} Hz
4.00	ER90C-8DN.I7.1R	160M	I	720	9.37	780	54
5.50	ER90C-8DN.I7.1R	160M	II	720	12.50	870	60
7.50	ER90C-6DN.I7.1R	160L	III	970	15.80	970	50
11.00	ER90C-6DN.K7.1R	160L	IV	970	22.60	1090	56
15.00	ER90C-6DN.M7.1R	180L	V	970	29.30	1210	62
18.50	ER90C-6DN.N7.1R	200L	VI	970	35.90	1300	67
22.00	ER90C-6DN.N7.1R	200L	VII	970	41.50	1380	71
30.00	ER90C-4DN.N7.1R	200L	VIII	1480	54.00	1475	50

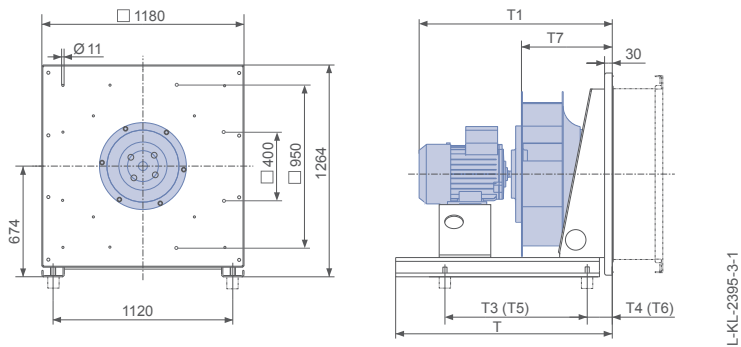
* Identical performance data for ER..C and GR..C

Basic version ER				Basic version GR			
Rated power P_N kW	Type ER..C	Article no. ER..C	\bar{h} max.	Type GR..C	Installation position Vu Article no. GR..C	Installation position Vo Article no. GR..C	\bar{h} max.
4.00	ER90C-8DN.I7.1R	130537/0F01	324	GR90C-8DN.I5.1R	113824/U01	113824/O01	340
5.50	ER90C-8DN.I7.1R	130538/0F01	346	GR90C-8DN.I5.1R	113825/U01	113825/O01	362
7.50	ER90C-6DN.I7.1R	130539/0F01	326	GR90C-6DN.I5.1R	113826/U01	113826/O01	342
11.00	ER90C-6DN.K7.1R	130540/0F01	340	GR90C-6DN.K5.1R	113827/U01	113827/O01	356
15.00	ER90C-6DN.M7.1R	130541/0F01	378	GR90C-6DN.M5.1R	113828/U01	113828/O01	390
18.50	ER90C-6DN.N7.1R	130542/0F01	416	GR90C-6DN.N5.1R	113829/U01	113829/O01	425
22.00	ER90C-6DN.N7.1R	130543/0F01	430	GR90C-6DN.N5.1R	113830/U01	113830/O01	439
30.00	ER90C-4DN.N7.1R	130544/0F01	447	GR90C-4DN.N5.1R	113831/U01	113831/O01	456



Dimensions in mm

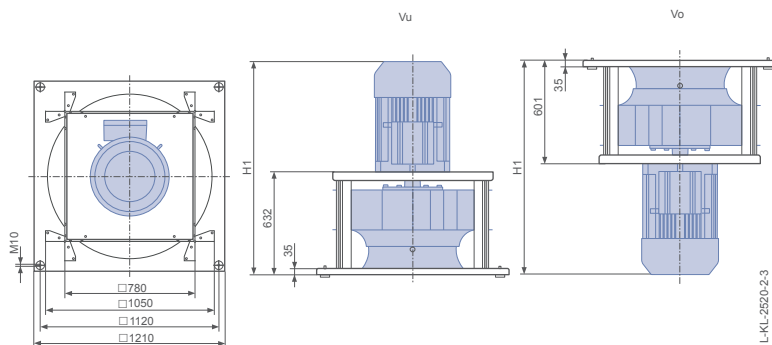
Plug fan ER in installation position H



Rated power	Type	T	T1	T3	T4	T5	T6	T7	Spring vibration damper	Rubber dampers
P_N kW		mm	mm	mm	mm	mm	mm	mm		
4.00	ER90C-8DN.I7.1R	1160	1091	1026	74	760	190	551	SD 4	75x50 / 40
5.50	ER90C-8DN.I7.1R	1160	1091	1000	100	780	195	551	SD 4	75x50 / 40
7.50	ER90C-6DN.I7.1R	1160	1091	1024	76	806	169	551	SD 5	75x50 / 40
11.00	ER90C-6DN.K7.1R	1160	1146	988	112	870	155	551	SD 5	75x50 / 40
15.00	ER90C-6DN.M7.1R	1320	1216	1112	88	1012	123	551	SD 5	75x50 / 40
18.50	ER90C-6DN.N7.1R	1320	1255	1202	78	1050	140	551	SD 6	75x50 / 40
22.00	ER90C-6DN.N7.1R	1320	1255	1182	95	1104	119	551	SD 6	75x50 / 40
30.00	ER90C-4DN.N7.1R	1320	1255	1168	109	1088	135	551	SD 6	75x50 / 40

T5 and T6 apply to attachment of Ziehl-Abegg intake flanges.

Ventilation unit GR in installation position Vu/Vo



Rated power	Type	Installation position Vu	Installation position Vo
P_N kW		H1 mm	H1 mm
4.00	GR90C-8DN.I5.1R	1097	1066
5.50	GR90C-8DN.I5.1R	1097	1066
7.50	GR90C-6DN.I5.1R	1097	1066
11.00	GR90C-6DN.K5.1R	1152	1121
15.00	GR90C-6DN.M5.1R	1222	1191
18.50	GR90C-6DN.N5.1R	1261	1230
22.00	GR90C-6DN.N5.1R	1261	1230
30.00	GR90C-4DN.N5.1R	1261	1230