

HF HUNG FENG



# 宏豐送風機

高風量、低噪音、外觀美、吹吸雙功能、無油無污染



# 單位換算表

## Units-Conversion

### 壓力 Pressure

	mbar	pa	atm	1bf/in <sup>2</sup>	kgf/cm <sup>2</sup>	in Hg	mm Aq
1 mbar	1	10 <sup>2</sup>	9.869x10 <sup>-4</sup>	1.45x10 <sup>-2</sup>	1.02x10 <sup>-3</sup>	2.953x10 <sup>-2</sup>	10.197
1 pa	0.01	1	9.87x10 <sup>-6</sup>	1.45x10 <sup>-4</sup>	1.02x10 <sup>5</sup>	2.953x10 <sup>-4</sup>	0.102
1 atm	1.013x10 <sup>3</sup>	1.013x10 <sup>5</sup>	1	14.7	1.033	29.92	1.033x10 <sup>4</sup>
1bf/in <sup>2</sup>	68.95	68.95x10 <sup>-2</sup>	6.805x10 <sup>-2</sup>	1	7.03x10 <sup>-2</sup>	2.036	7.03x10 <sup>2</sup>
1 kgf/cm <sup>2</sup>	9.807x10 <sup>2</sup>	9.807x10 <sup>4</sup>	0.968	14.223	1	28.96	10 <sup>4</sup>
1 in Hg	33.86	33.86x10 <sup>3</sup>	3.342x10 <sup>-2</sup>	0.491	3.45x10 <sup>-2</sup>	1	3.45x10 <sup>2</sup>
1 mmAq	9.807x10 <sup>-2</sup>	9.807	9.677x10 <sup>-5</sup>	1.42x10 <sup>-2</sup>	10 <sup>-4</sup>	2.896x10 <sup>-3</sup>	1

### 壓力常用換算公式

1pa=0.102mmAq  
 1mbar=10.197mmAq  
 1mmHg=13.6mmAq  
 1psi=703mmAq  
 1Torr=133.3pa  
 1 Torr=1.333mbar

### 風量 Capacity

	m <sup>3</sup> /min	m <sup>3</sup> /hr	l/min	ft <sup>3</sup> /min(cfm)
1m <sup>3</sup> /min	1	60	1000	35.31
1m <sup>3</sup> /hr	0.017	1	16.67	0.589
1 l/min	0.001	0.06	1	0.035
1 ft <sup>3</sup> /min(cfm)	0.028	1.699	28.32	1

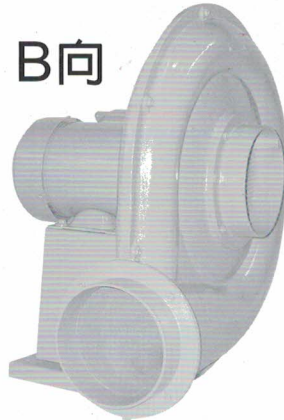
### 功率 Power

	kg-m/sec	KW	HP	PS
1kg-m/sec	1	0.01	0.013	0.013
1KW	101.97	1	1.341	1.360
1HP	76.038	0.746	1	1.014
1PS	75	0.736	0.986	1

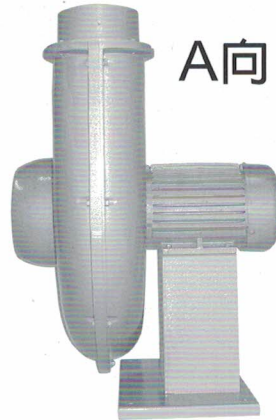
- 營業項目—各種送風機、機械五金製造業務  
各種送風機、機械之經營投資及進出口業務
- 主要產品—透浦式鼓風機、透浦式多段式鼓風機、低噪音型鼓風機、多翼式鼓風機
- 適用範圍—產業機械、塑膠機械、印刷機械、印刷製板、電器設備、醫療設備、各式燃燒機、鍋鏟、環保養殖業...等
- 公司展望及目標—隨著國內工業升級，也有感於提升市場競爭力的迫切性，為追求產品的穩定及標準化制度與自動化作業，本公司積極投入裝配設備與檢驗設備，在性能及規格、出風量，已不遜於先進國家，每年的研發費用約佔營業額的 6%，希望於近期内能正式取得各種認證並加強拓展海外市場並加強品質管制。



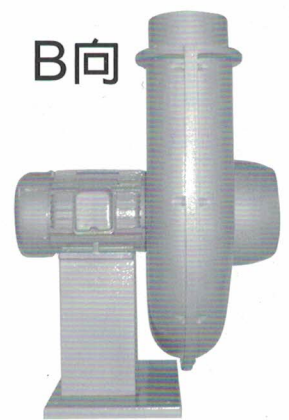
A向



B向

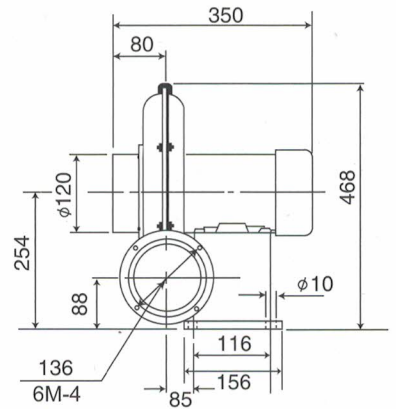
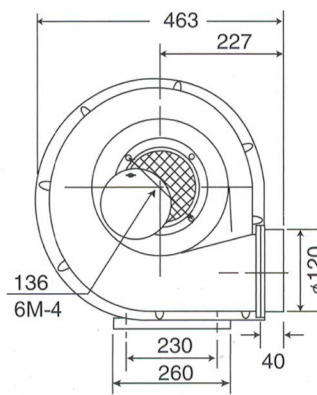
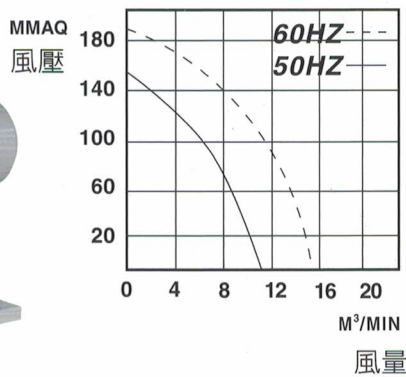
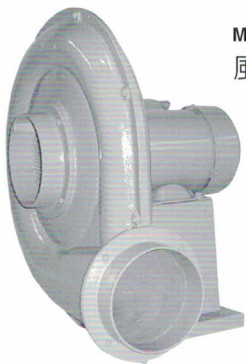


A向

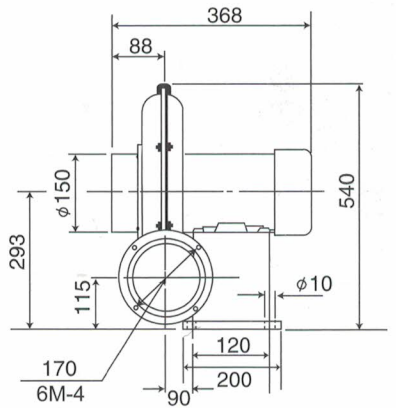
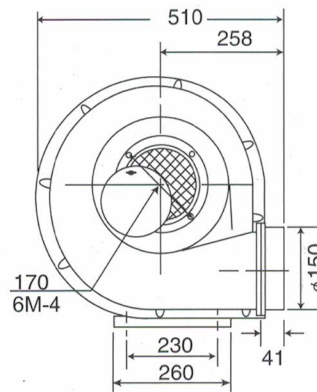
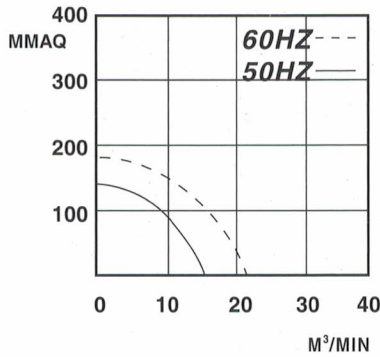


B向

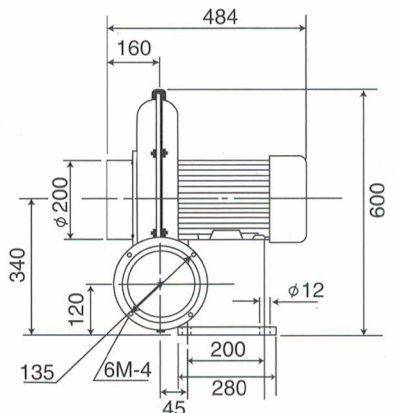
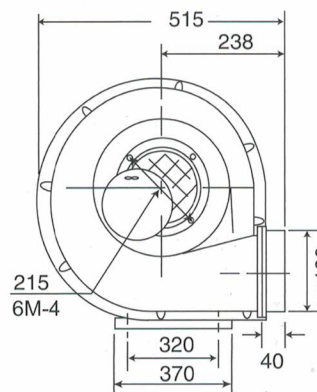
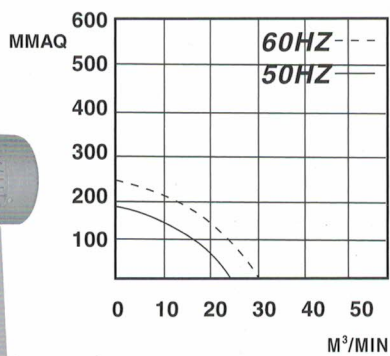
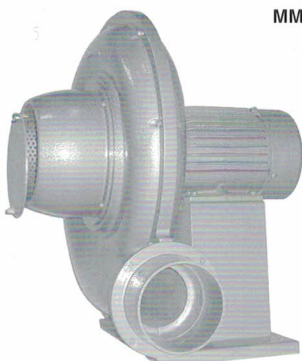
## HK-8005 (0.4KW)



## HK-801 (0.75KW)



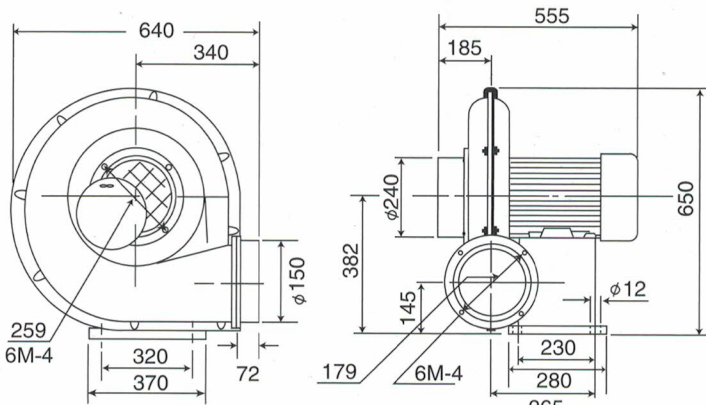
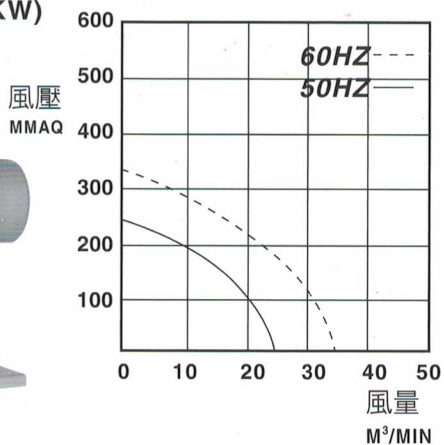
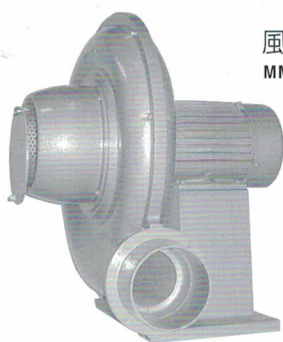
## HK-802 (1.5KW)



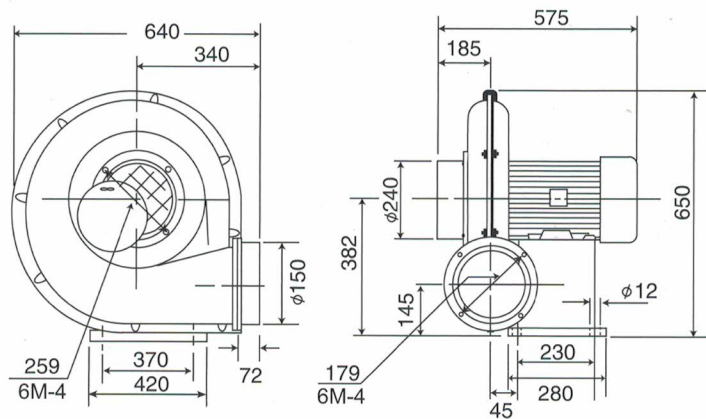
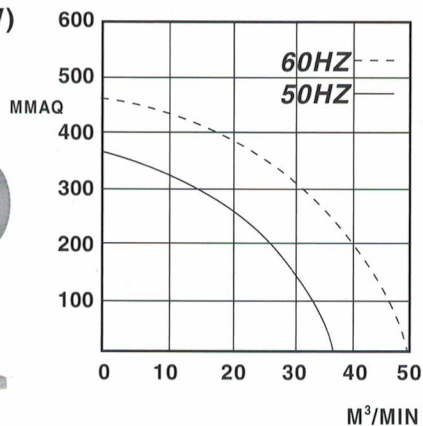


# HK Series

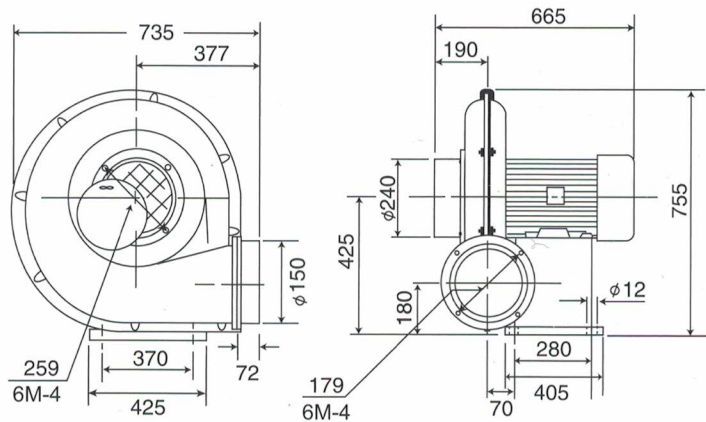
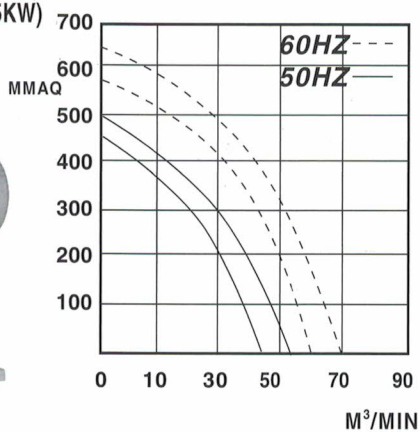
## HK-803 (2.2KW)



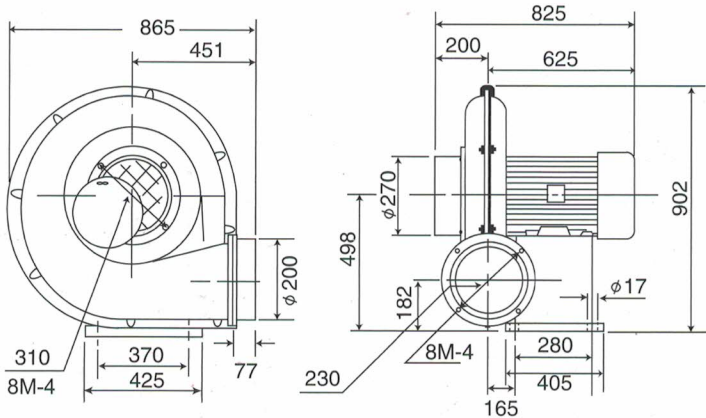
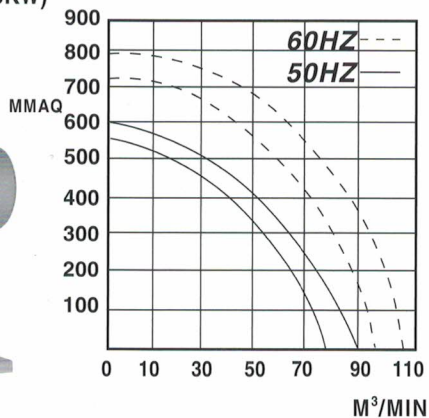
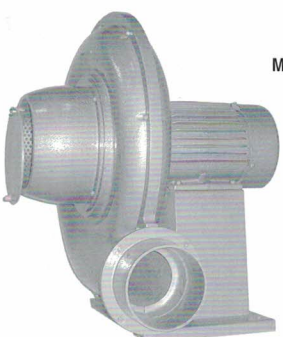
## HK-804 (3.7KW)



## HK-805-810 (5.5-7.5KW)



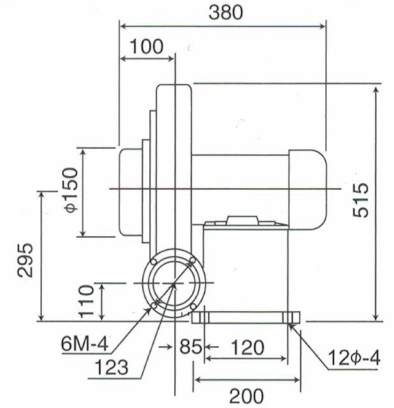
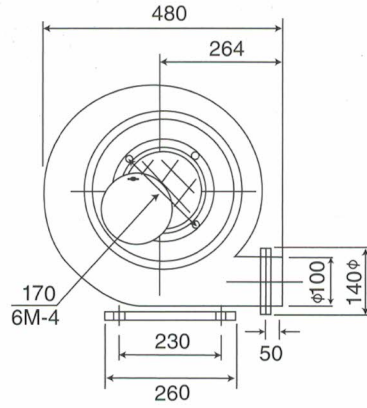
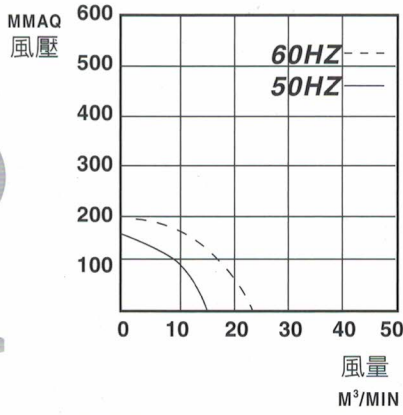
## HK-815-820 (11-15KW)



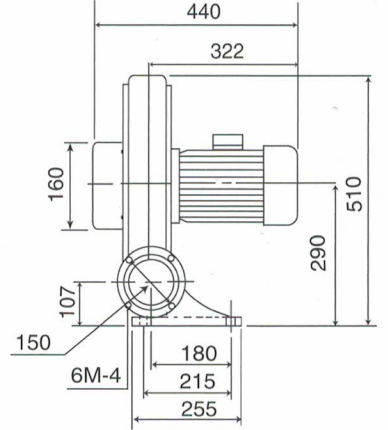
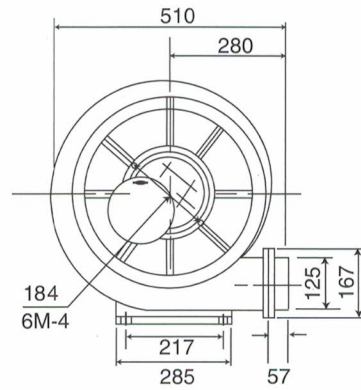
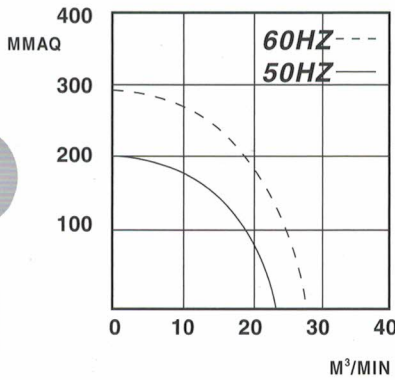
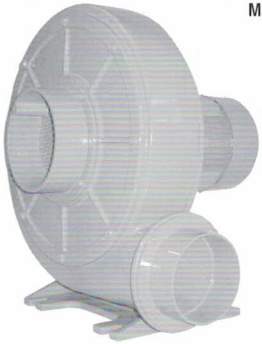
©本公司保有設計變更之權利，恕不另行通知。



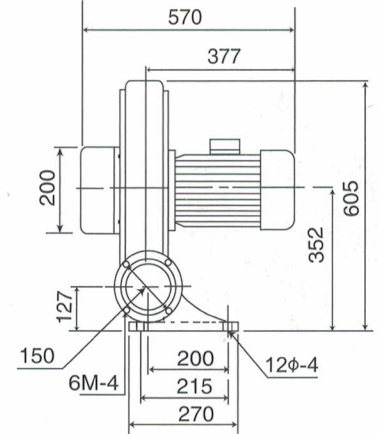
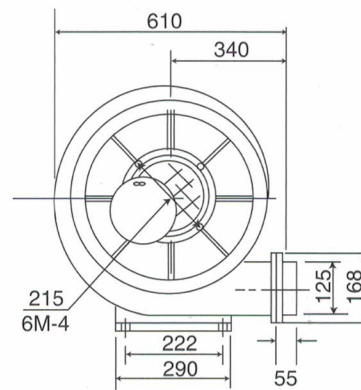
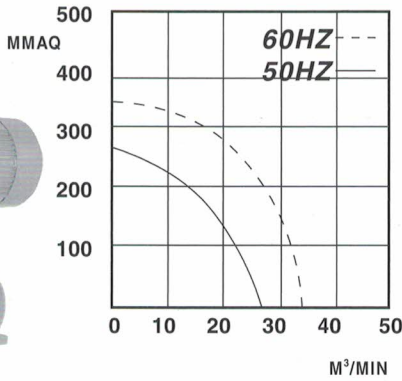
## LK-801 (0.75KW)



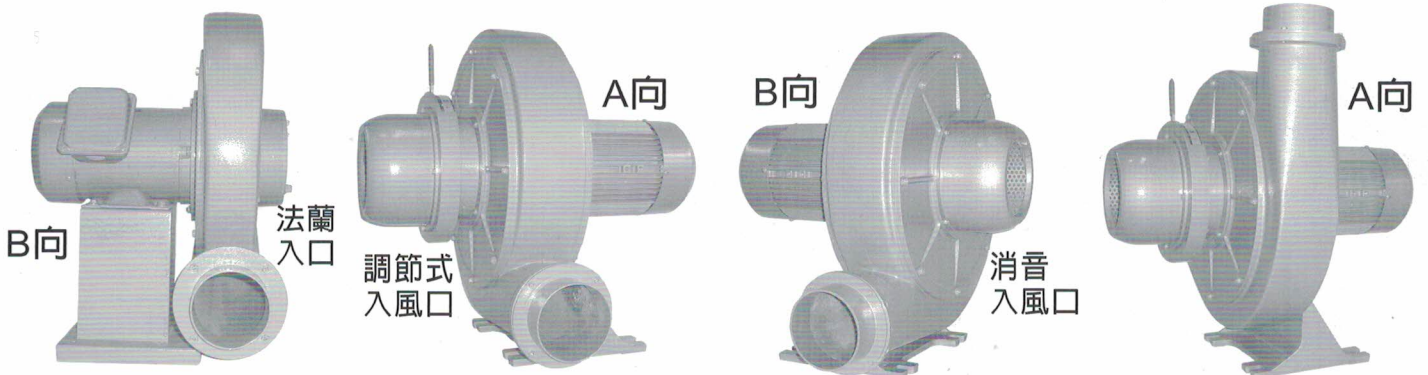
## LK-802 (1.5KW)



## LK-803 (2.2KW)

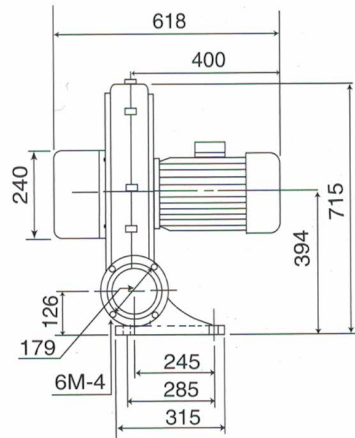
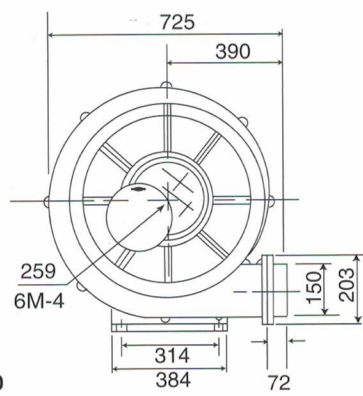
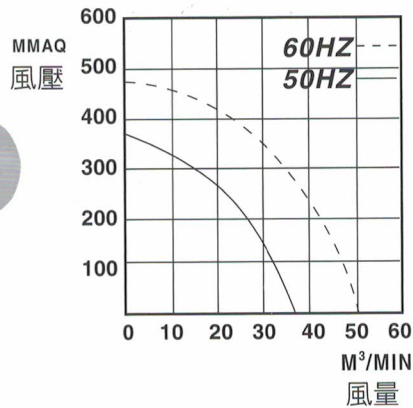
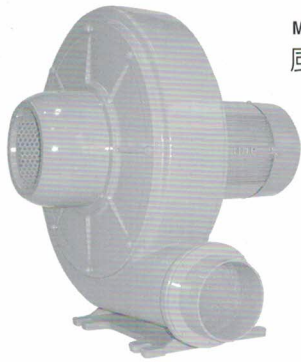


● 出風口方向及馬達可改變

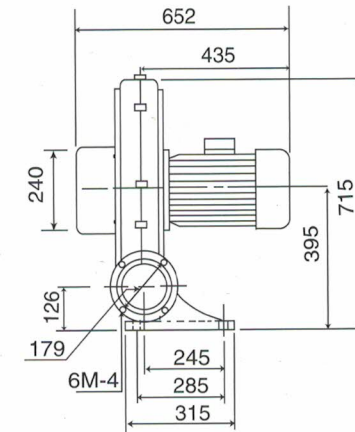
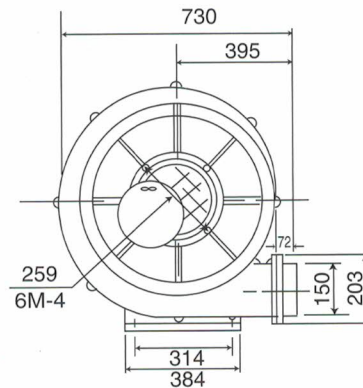
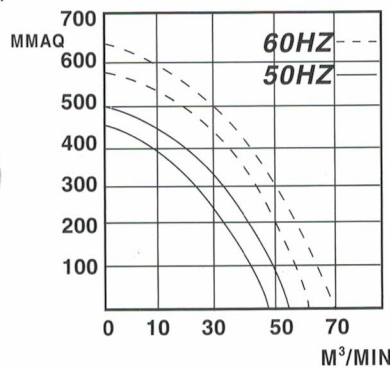
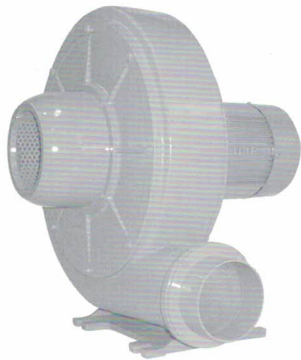




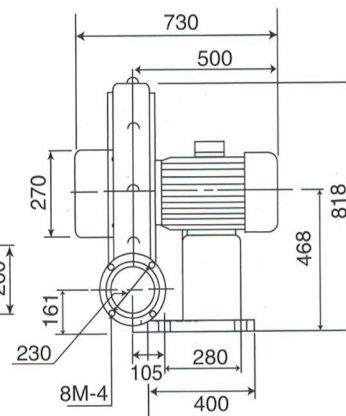
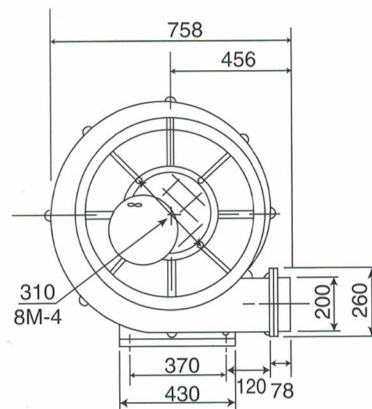
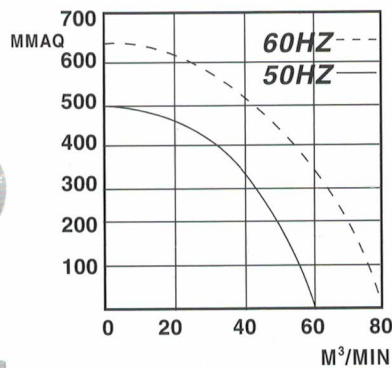
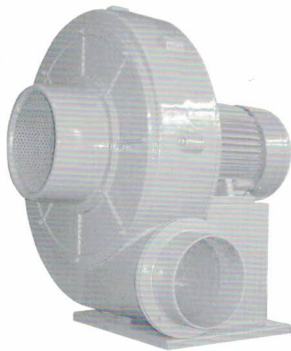
## LK-804 (3.7KW)



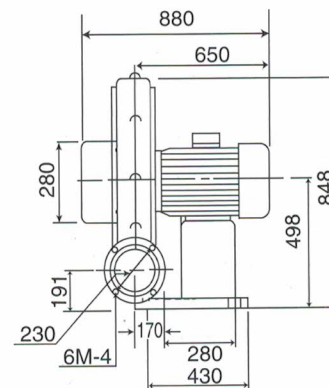
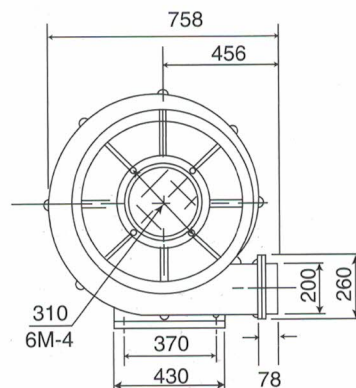
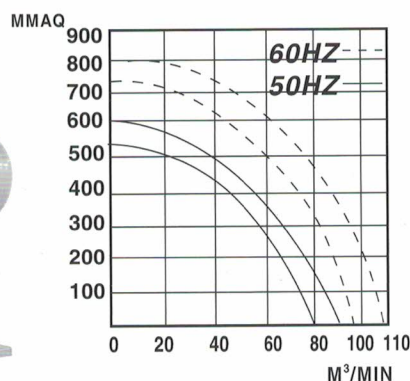
## LK-805-810 (5.5-7.5KW)



## LK-810-L (7.5KW)

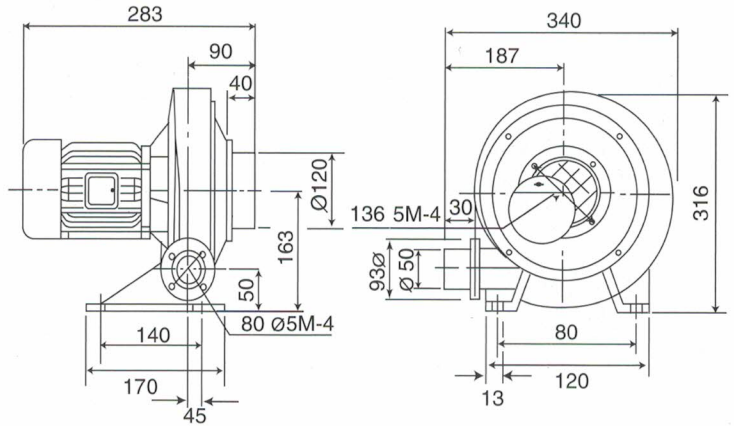
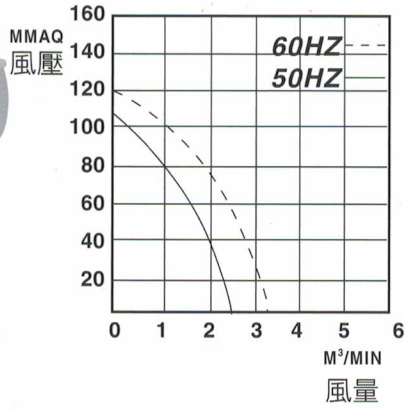


## LK-815-820 (11-15KW)

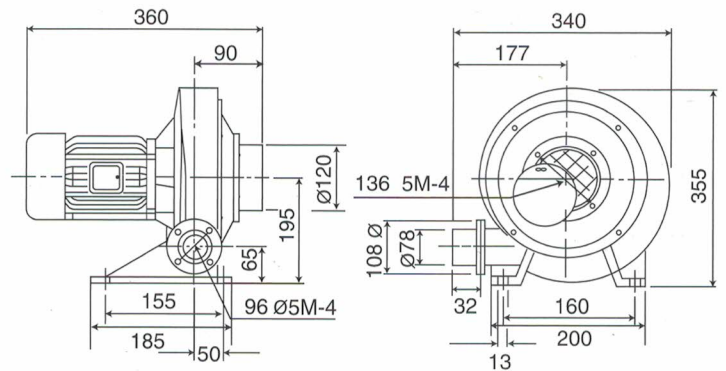
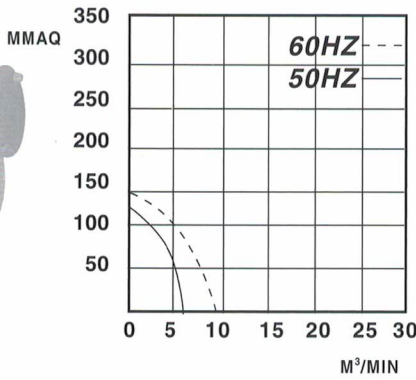




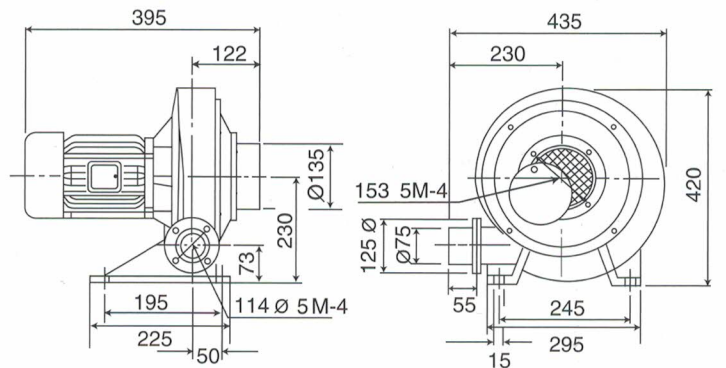
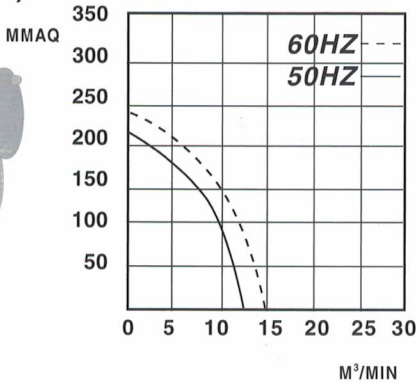
## BCT-060 (0.2KW)



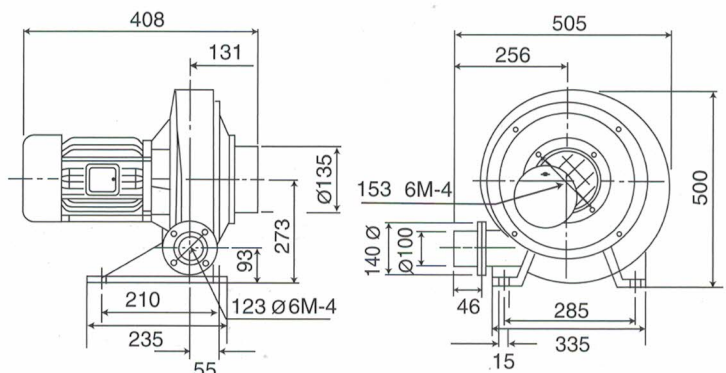
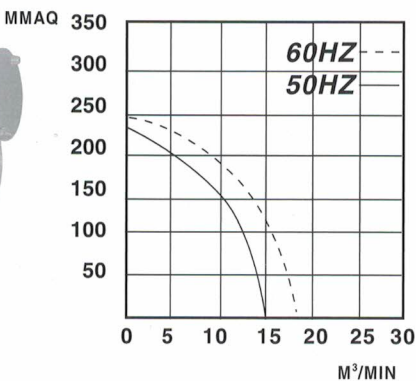
## BCT-061 (0.4KW)



## BCT-063 (0.75KW)

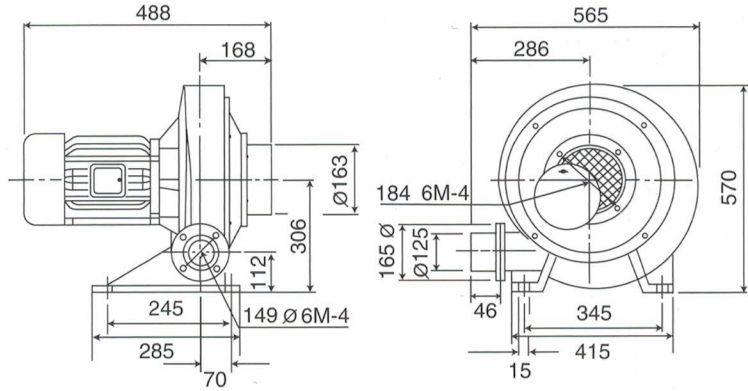
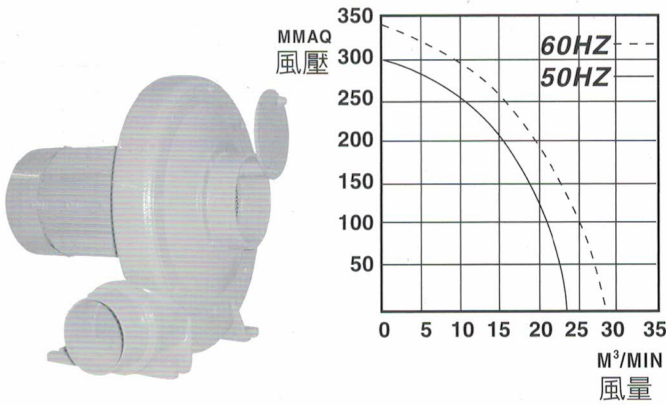


## BCT-064 (1.5KW)

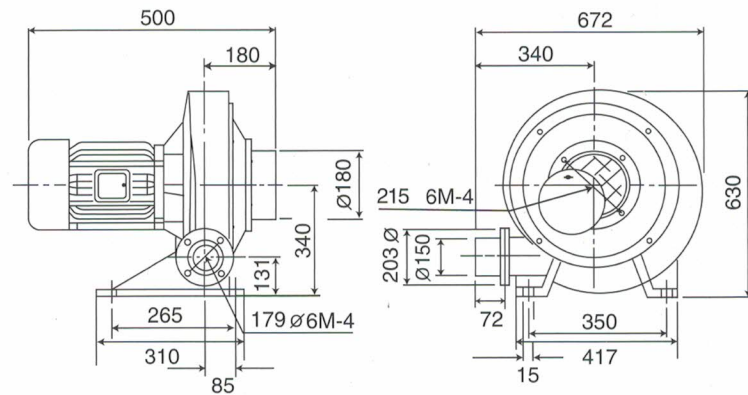
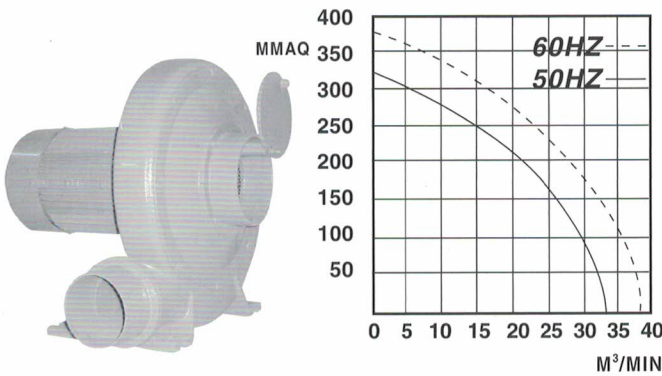




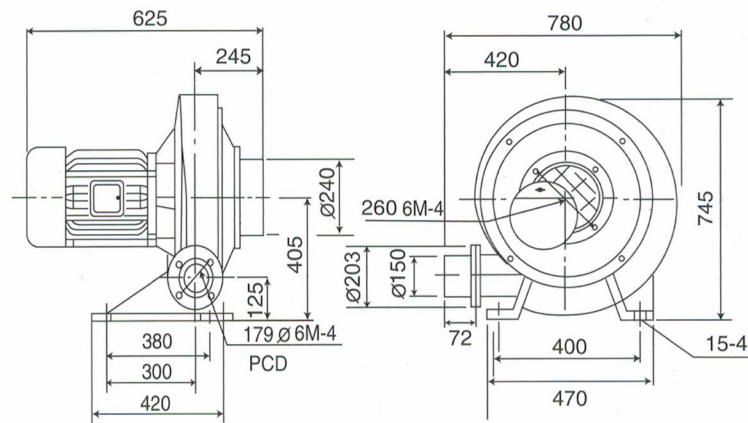
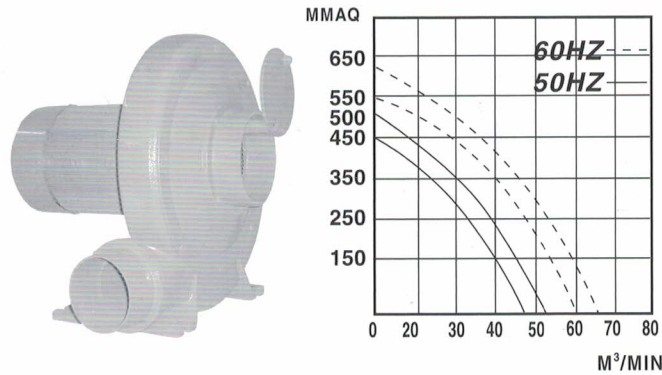
## BCT-065 (2.2KW)



## BCT-066 (3.7KW)



## BCT-067-068 (5.5KW - 7.5KW)

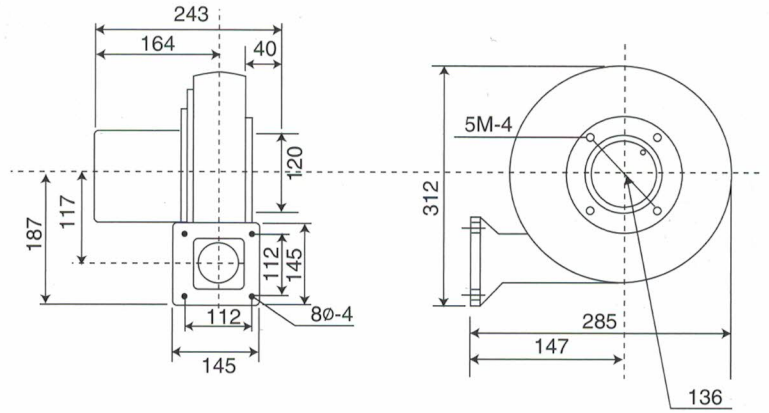
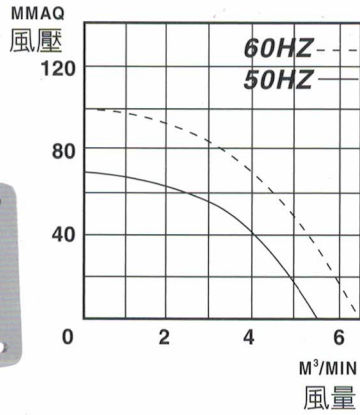
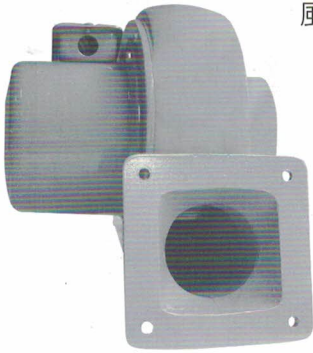


● 各系列產品皆可訂製隔熱防濕功能

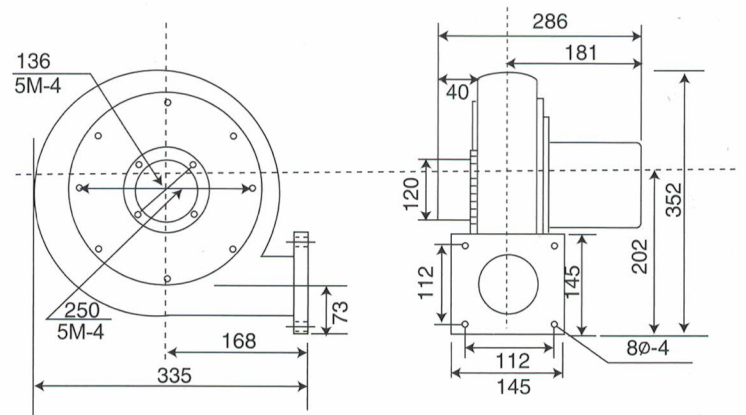
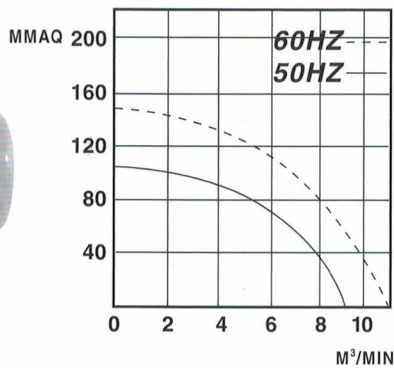




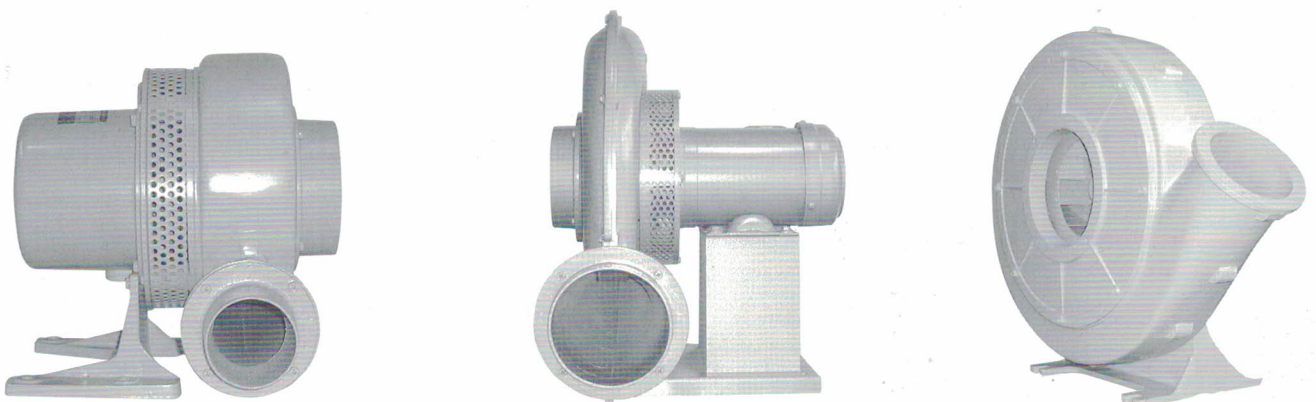
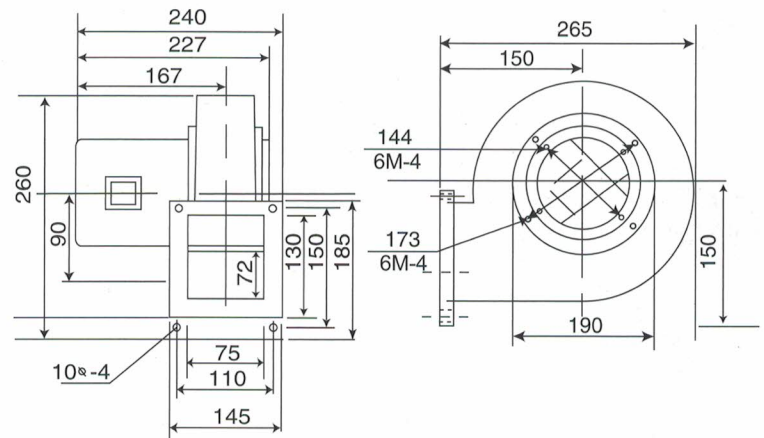
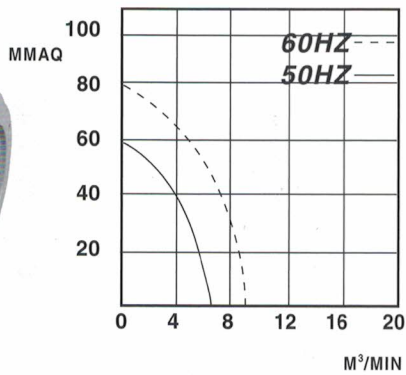
## LF-75 (0.1KW)



## LF-100 (0.2KW)

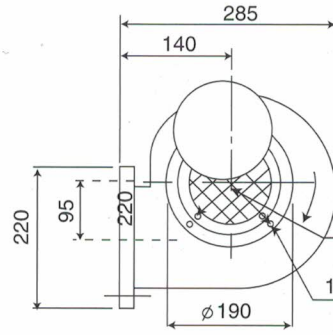
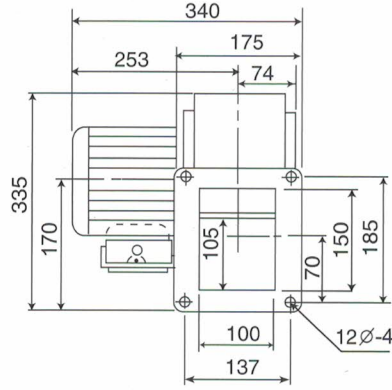
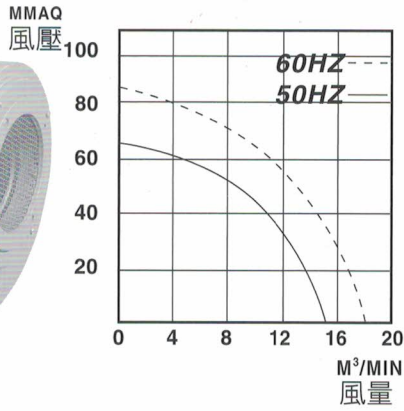


## LF-200 (0.2KW)

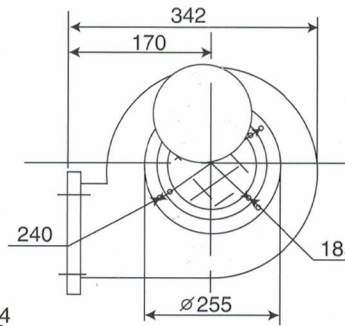
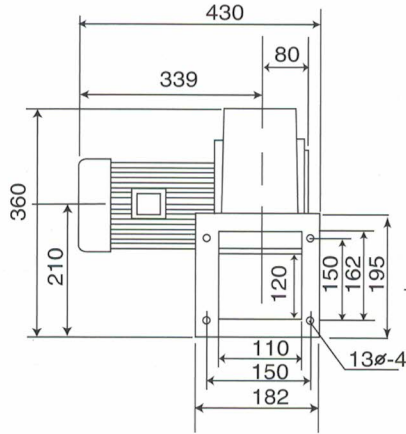
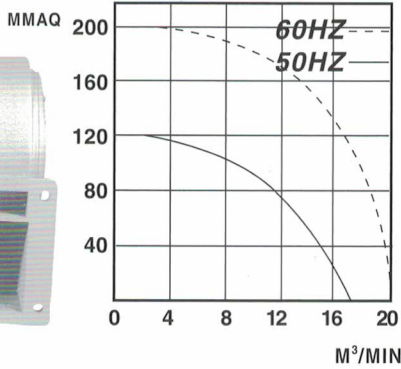




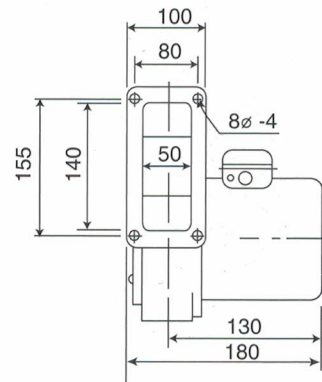
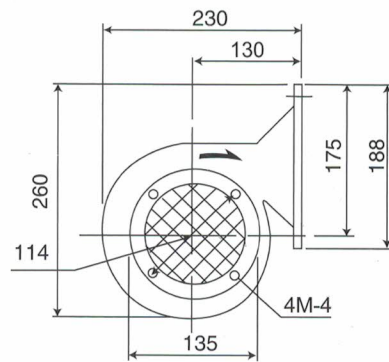
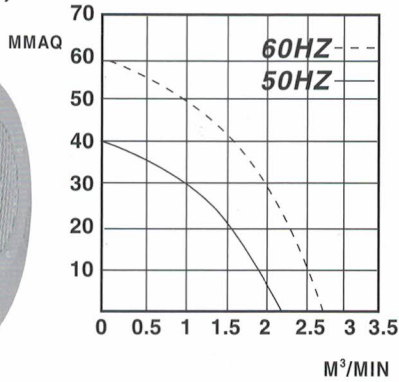
## LF-400 (0.4KW)



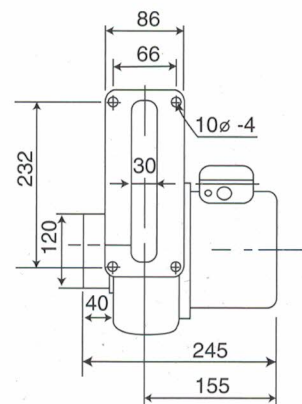
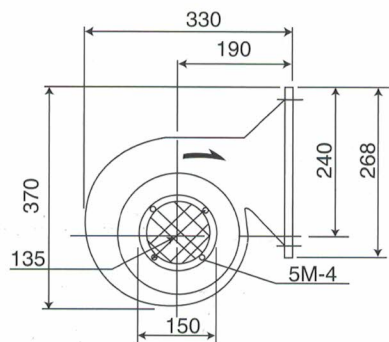
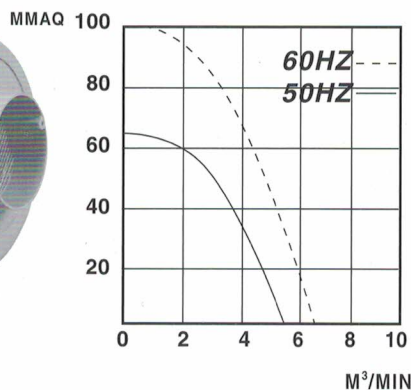
## LF-750 (0.75KW)



## YF-50 (0.05KW)

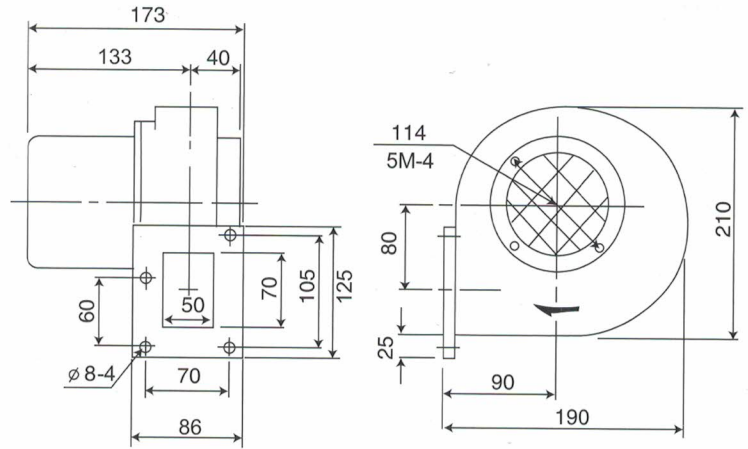
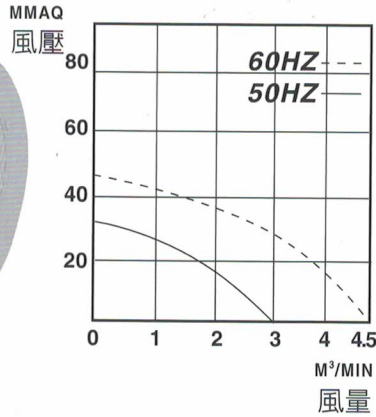


## YF-75 (0.1KW)

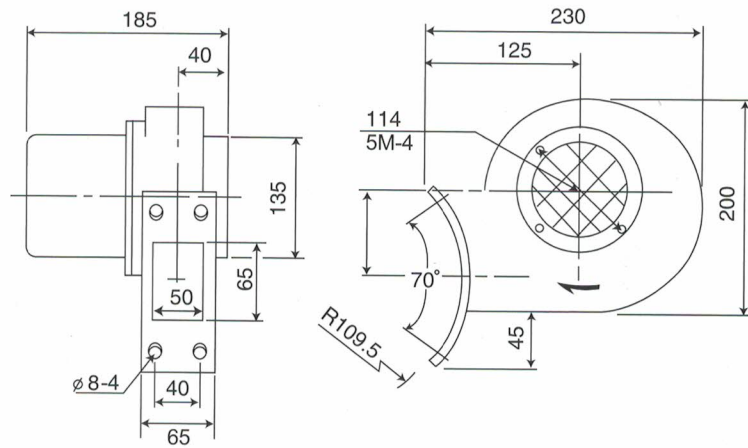
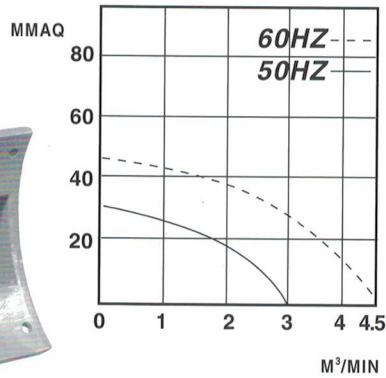




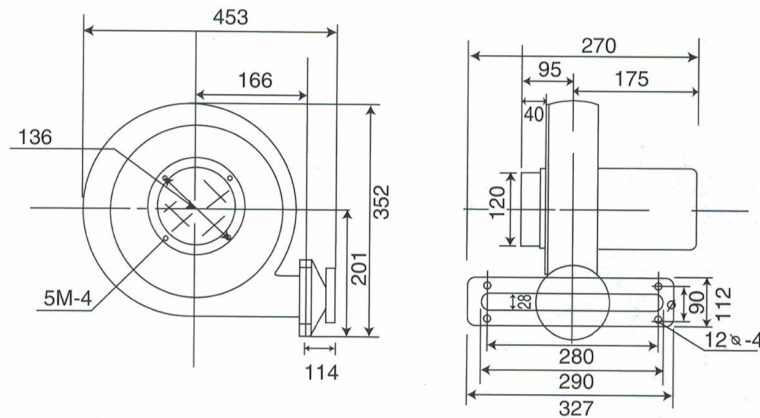
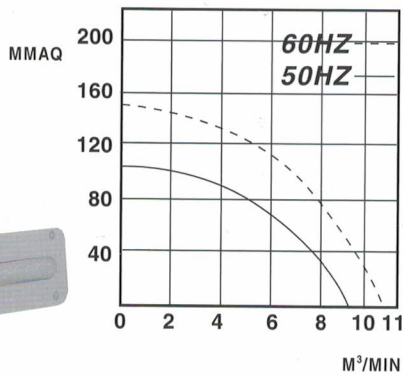
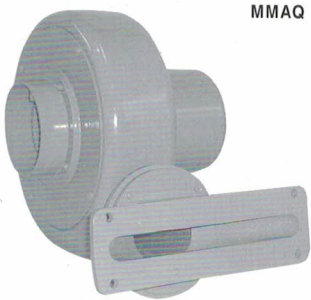
## YF-80 (0.05KW)



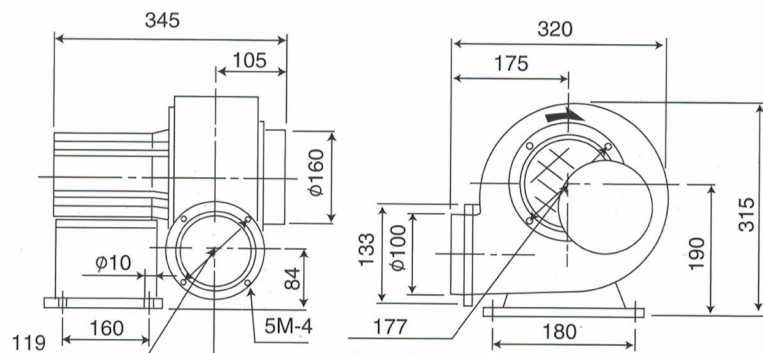
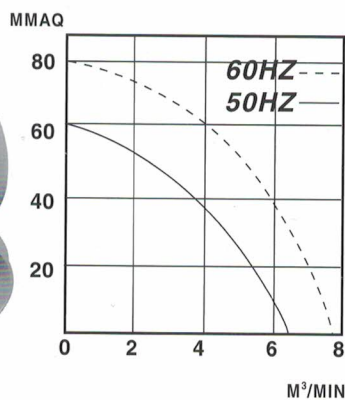
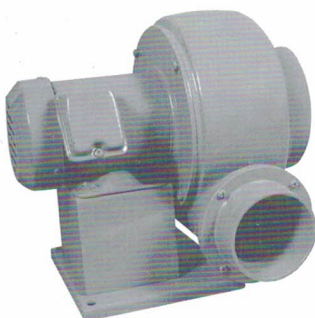
## YF-80A (0.05KW)



## YF-100 (0.2KW)

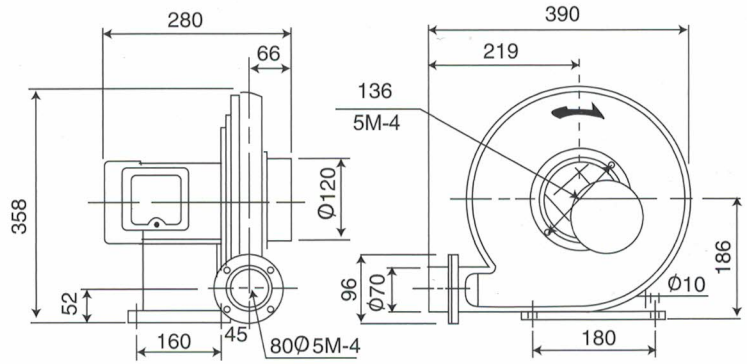
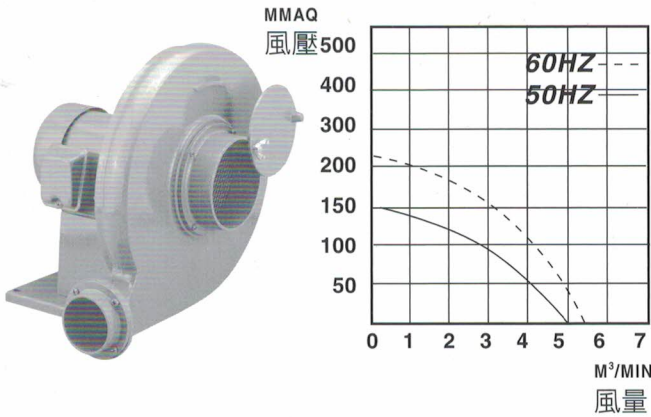


## LT-5 (0.2KW)

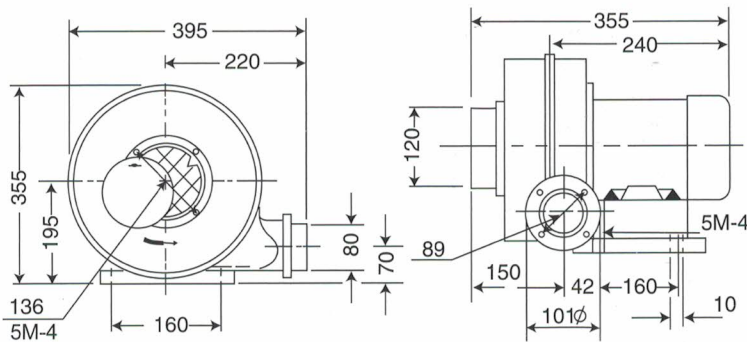
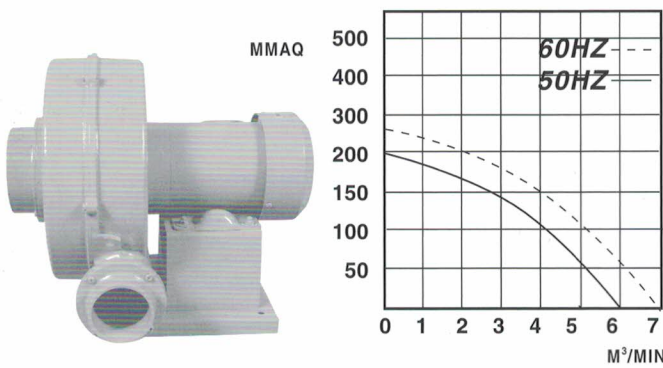




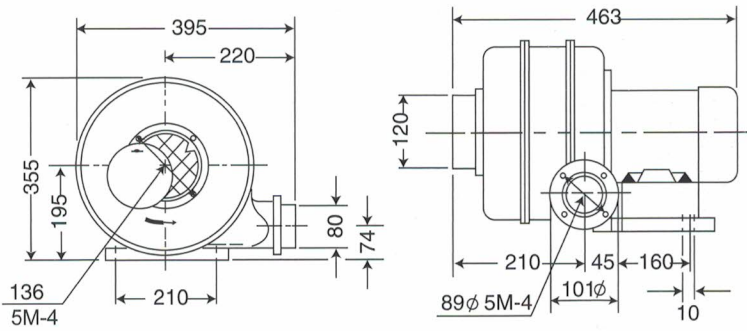
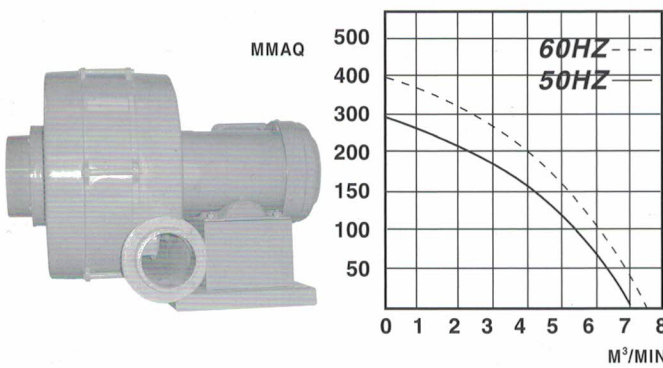
## NT-4 (0.2KW)



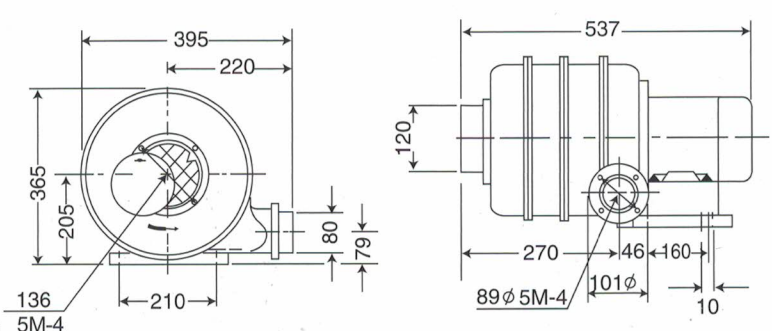
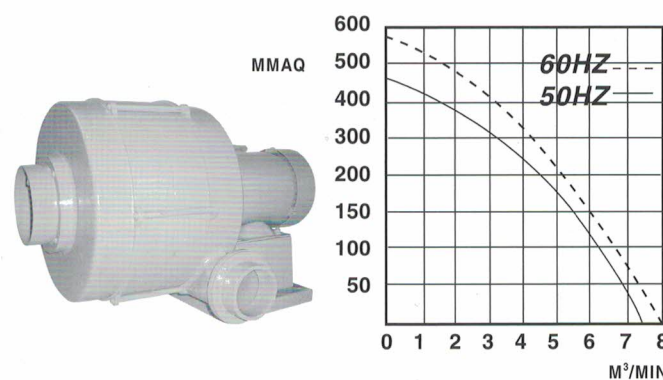
## NT-5 (0.2KW)

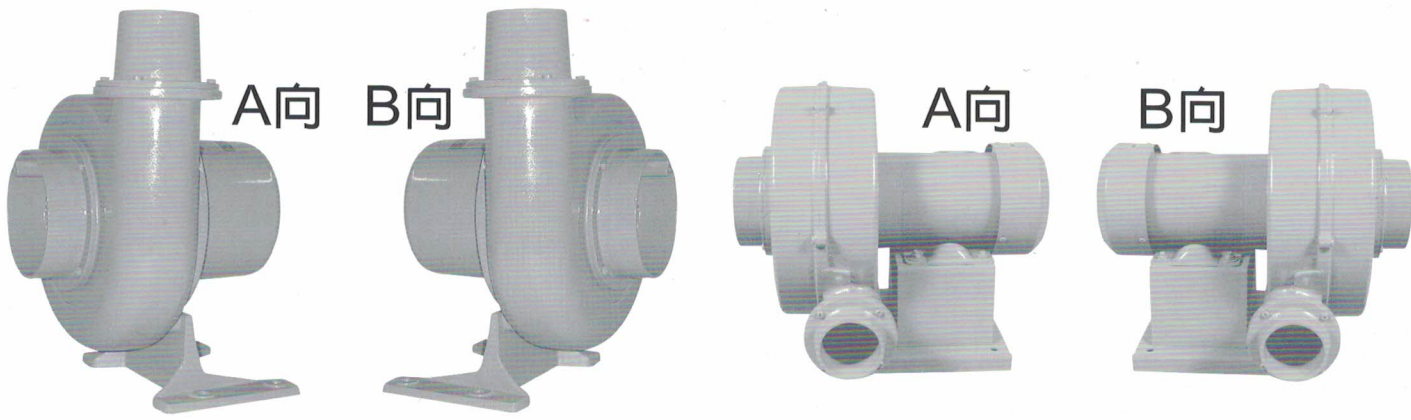


## NT-6 (0.4KW)

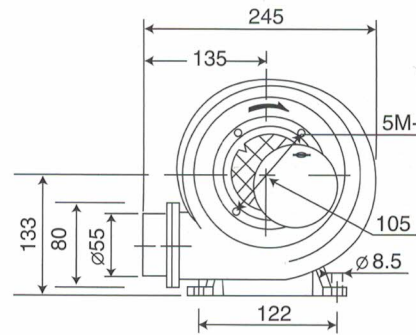
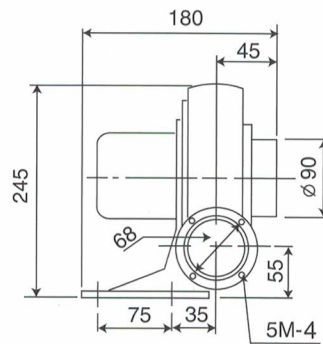
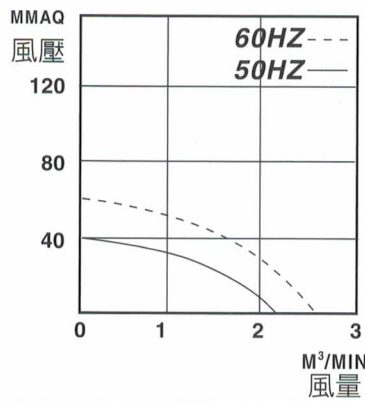


## NT-8 (0.75KW)

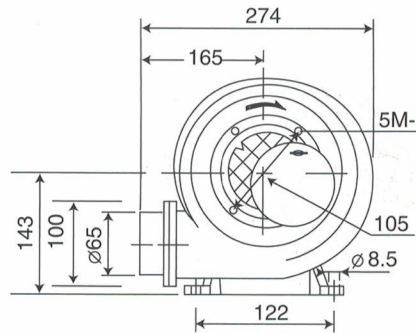
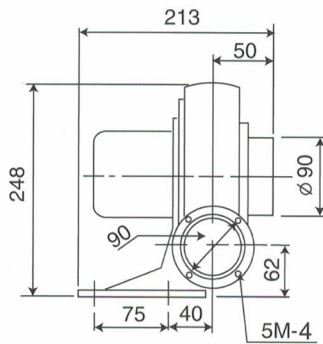
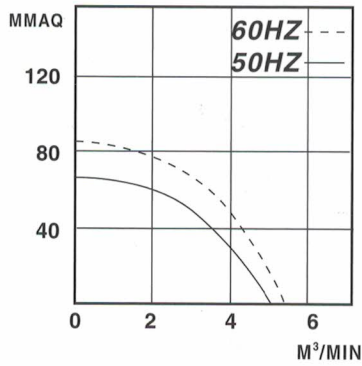




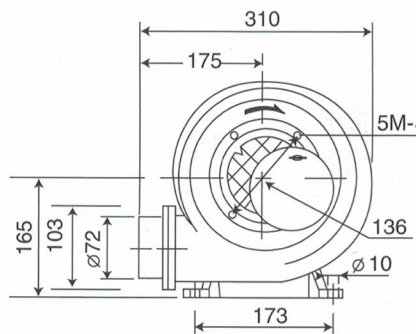
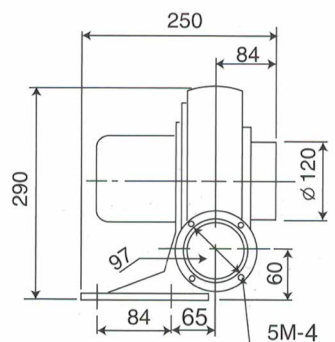
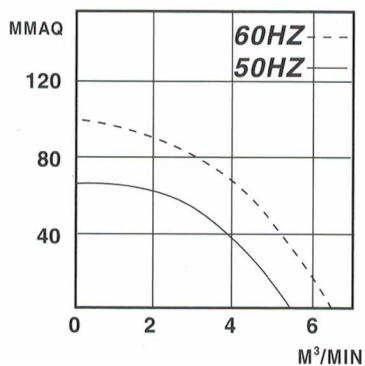
## LS-50 (0.05KW)



## LS-65 (0.08KW)

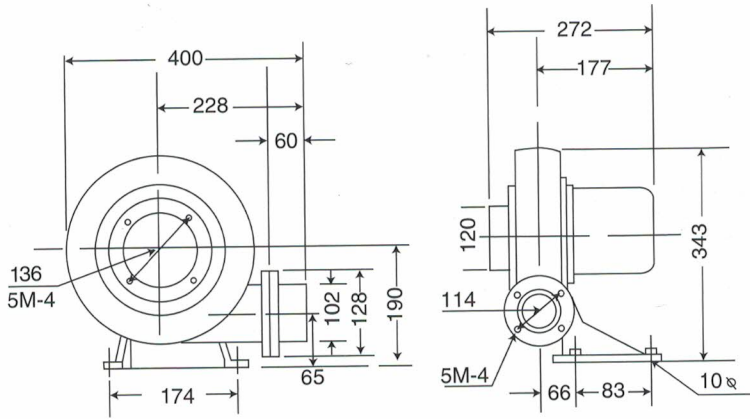
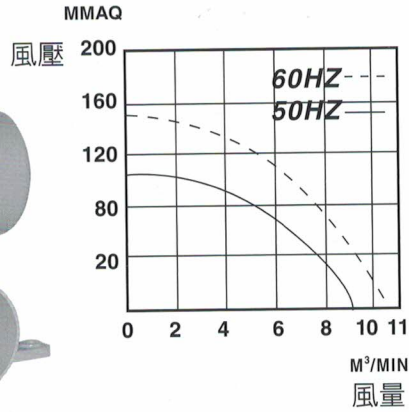


## LS-75 (0.1KW)

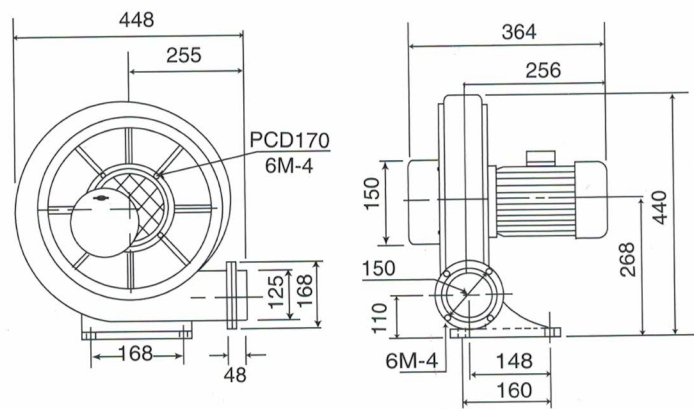
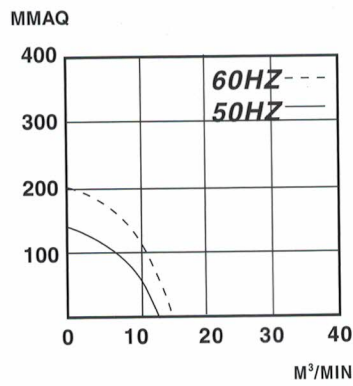
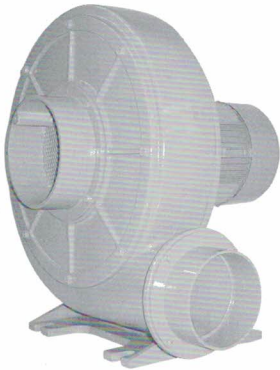




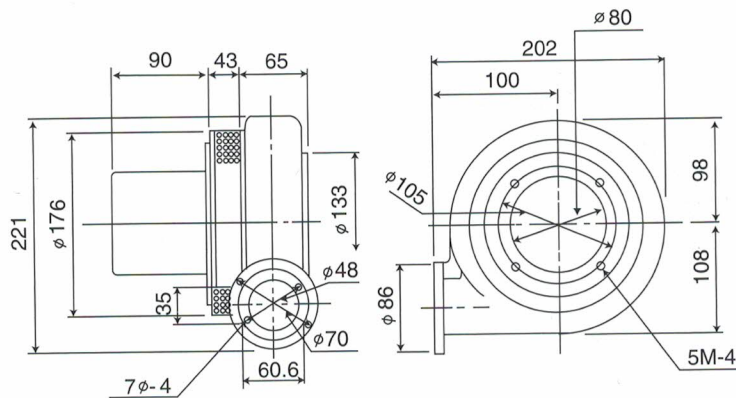
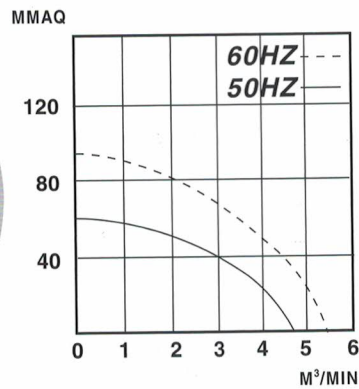
## LS-100 (0.2KW)



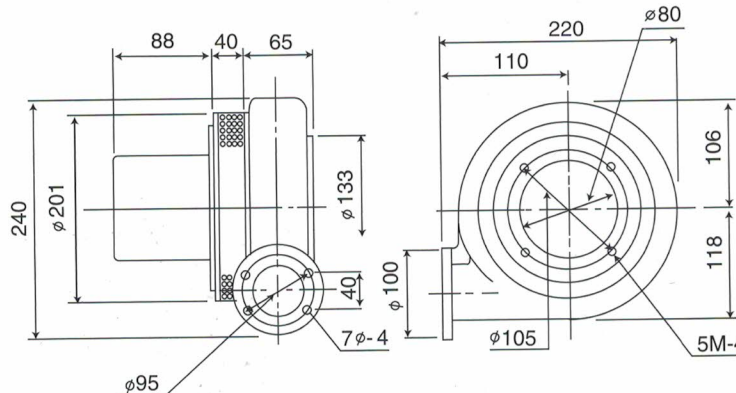
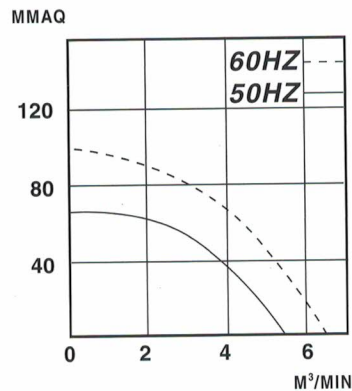
## LS-125 (0.4KW)



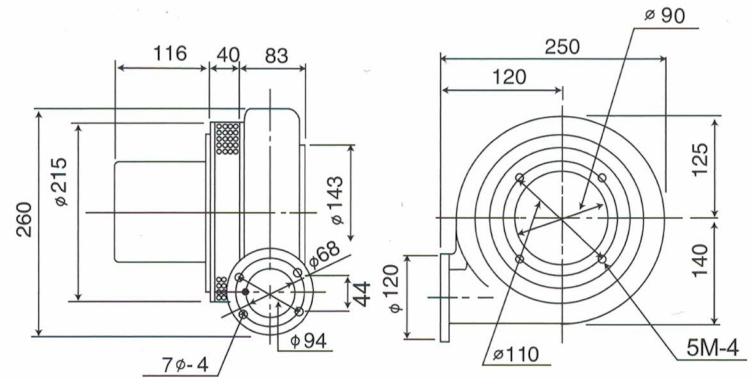
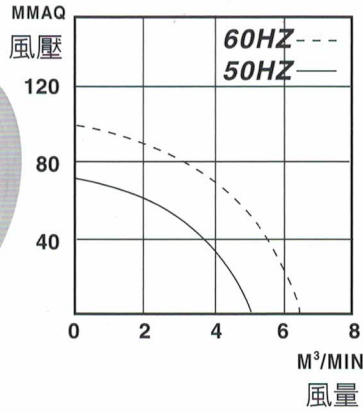
## BH-BT (0.05KW)



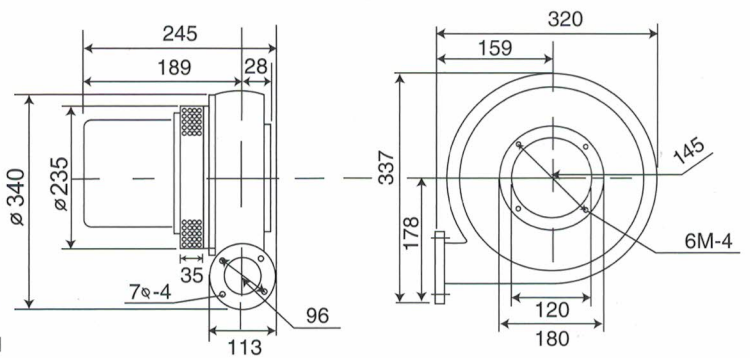
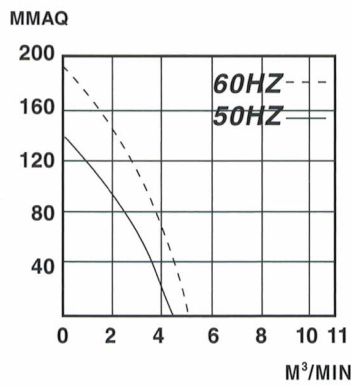
## BH-1BT (0.08KW)



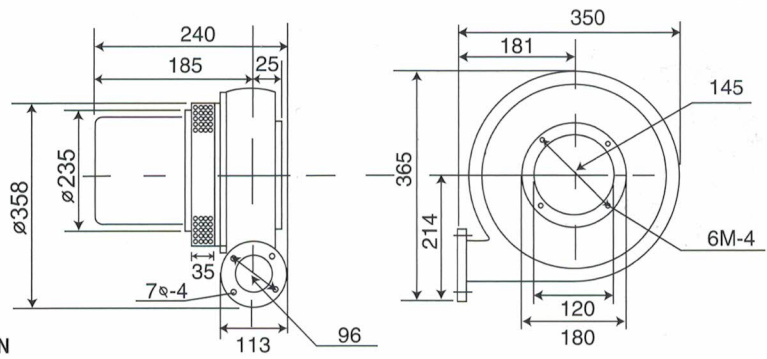
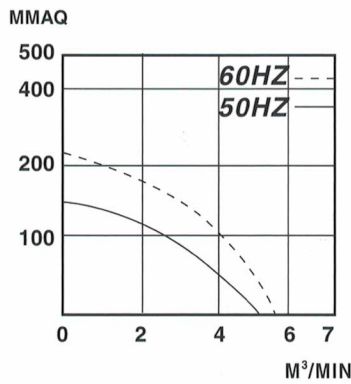
## BH-2BT (0.1KW)



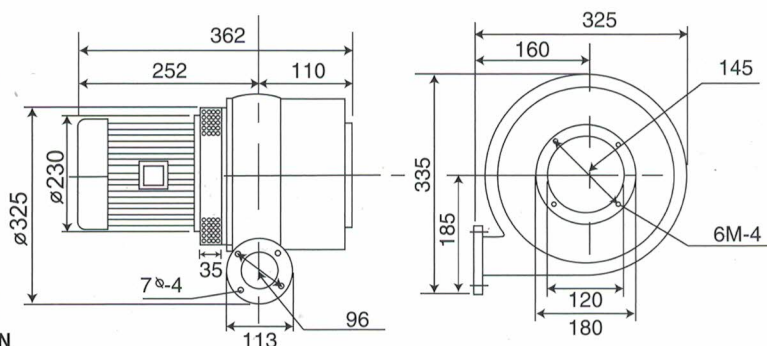
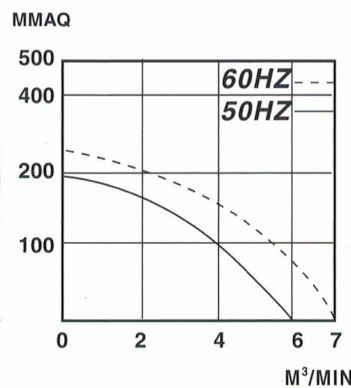
## BH-3BT (0.2KW)



## BH-4BT (0.2KW)

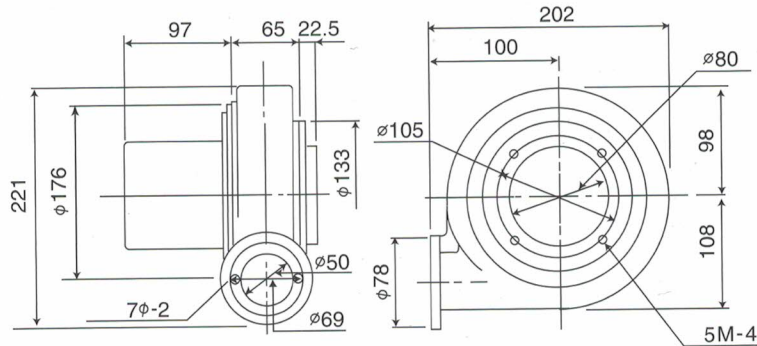
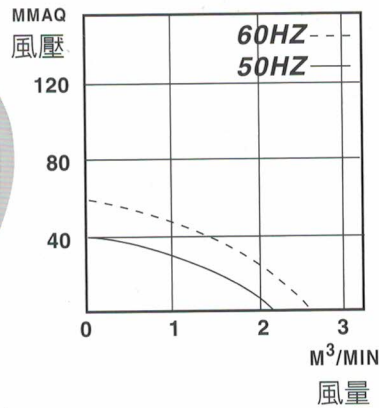


## BH-5BT (0.4KW)

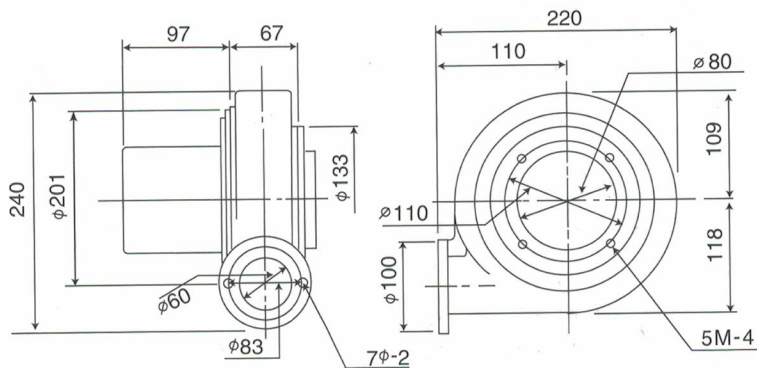
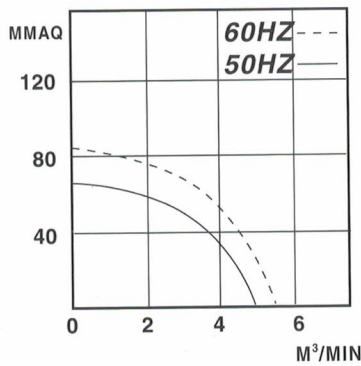




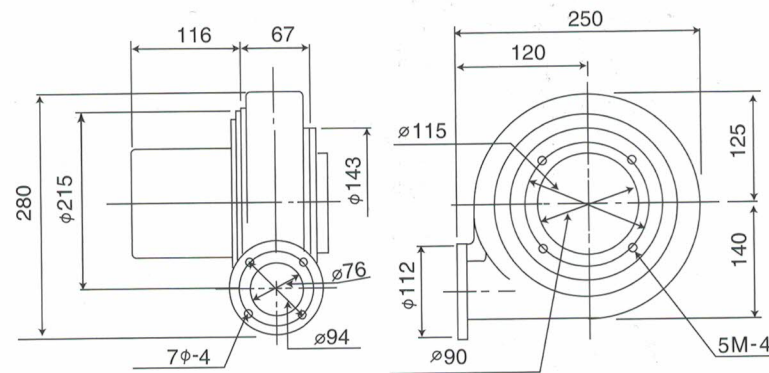
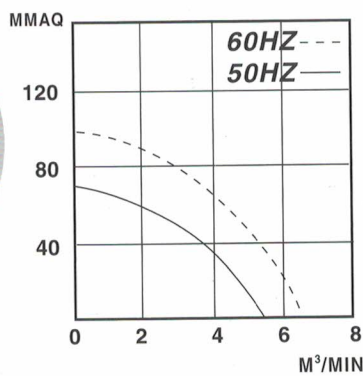
## HN-13BT (0.05KW)



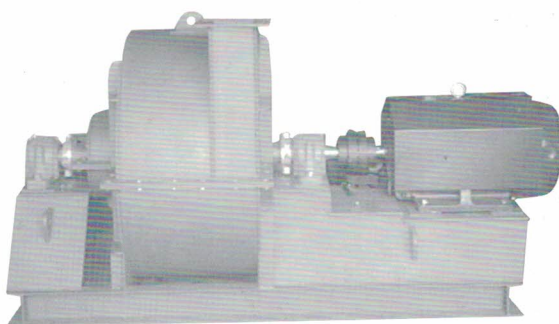
## HN-25BT (0.08KW)



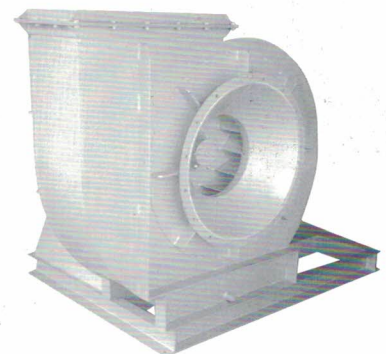
## HN-50BT (0.1KW)



● 接受鐵殼及不銹鋼材質及各種特殊規格訂製



多段風機 Q= 20~300CMM  
PS=1000~8000mmAq



單段透浦風機(中壓) Q= 10~3000CMM  
PS=0~1000mmAq

## 性能表 TECHNICAL DATA

型號	最大出力	週波數	電壓	電流	週波數	電壓	電流	轉速	吐出壓力 風量		重量	噪音質
MODEL	RATED OUTPUT	FREQUENCY	VOLTAGE	CURRENT	FREQUENCY	VOLTAGE	CURRENT		MAXIMUM PERFORMANCE		WEIGHT	
	KW	HZ	V	A	HZ	V	A	R.P.M	MM / AQ	M3 / MIN	Kg	db
HK-8005	0.4	50	220 / 380	2.6 / 1.5	60	220 / 380	2.3 / 1.3	2750 / 3400	135 / 190	12 / 14	19.5	55 / 76
HK-801	0.75	50	220 / 380	3.6 / 2.02	60	220 / 380	3.5 / 2.08	2750 / 3400	190 / 210	21 / 25	28	58 / 80
HK-802	1.5	50	220 / 380	6.8 / 3.93	60	220 / 380	6.2 / 3.58	2750 / 3400	200 / 250	24 / 30	46	60 / 82
HK-803	2.2	50	220 / 380	9.2 / 5.3	60	220 / 380	8.3 / 4.79	2750 / 3400	310 / 340	28 / 34	61	63 / 84
HK-804	3.7	50	220 / 380	14.4 / 8.3	60	220 / 380	13 / 7.51	2750 / 3400	380 / 480	35 / 50	71	65 / 87
HK-805	5.5	50	220 / 380	22 / 12.7	60	220 / 380	20 / 11.56	2750 / 3400	450 / 530	48 / 60	115	70 / 90
HK-810	7.5	50	220 / 380	29 / 16.76	60	220 / 380	27 / 15.6	2750 / 3400	500 / 620	54 / 70	126	80 / 95
HK-815	11.2	50	220 / 380	43 / 24.85	60	220 / 380	39 / 22.5	2750 / 3400	540 / 720	80 / 95	177	89 / 105
HK-820	15	50	220 / 380	55 / 31.7	60	220 / 380	52 / 30	2750 / 3400	600 / 780	90 / 108	195	93 / 113
LK-801	0.75	50	220 / 380	3.6 / 2.02	60	220 / 380	3.5 / 2.08	2750 / 3400	190 / 210	21 / 25	28	58 / 80
LK-802	1.5	50	220 / 380	6.8 / 3.93	60	220 / 380	6.2 / 3.58	2750 / 3400	200 / 250	24 / 30	33	60 / 82
LK-803	2.2	50	220 / 380	9.2 / 5.3	60	220 / 380	8.3 / 4.79	2750 / 3400	310 / 340	28 / 34	46	63 / 84
LK-804	3.7	50	220 / 380	14.4 / 8.3	60	220 / 380	13 / 7.51	2750 / 3400	370 / 480	36 / 50	60	65 / 87
LK-805	5.5	50	220 / 380	22 / 12.7	60	220 / 380	20 / 11.56	2750 / 3400	450 / 530	48 / 60	75	70 / 90
LK-810	7.5	50	220 / 380	27 / 15.6	60	220 / 380	29 / 16.76	2750 / 3400	500 / 620	58 / 70	126	80 / 95
LK-810L	7.5	50	220 / 380	29 / 16.76	60	220 / 380	27 / 15.6	2750 / 3400	500 / 620	60 / 78	126	80 / 95
LK-815	11.2	50	220 / 380	43 / 24.85	60	220 / 380	39 / 22.5	2750 / 3400	540 / 720	80 / 95	177	89 / 105
LK-820	15	50	220 / 380	55 / 31.7	60	220 / 380	52 / 30	2750 / 3400	600 / 780	90 / 108	195	96 / 113
BCT-060	0.2	50	220 / 380	1.7 / 0.98	60	220 / 380	1.5 / 0.86	2750 / 3400	100 / 120	2.5 / 3.5	10	60 / 65

◎各種電壓皆可訂製，訂製時請註明所需電壓。



## 性能表 TECHNICAL DATA

型號	最大出力	週波數	電壓	電流	週波數	電壓	電流	轉速	吐出壓力 風量		重量	噪音質
MODEL	RATED OUTPUT	FREQUENCY	VOLTAGE	CURRENT	FREQUENCY	VOLTAGE	CURRENT		MAXIMUM PERFORMANCE		WEIGHT	
	KW	HZ	V	A	HZ	V	A	R.P.M	MM / AQ	M3 / MIN	Kg	db
BCT-061	0.4	50	220 / 380	2.4 / 1.38	60	220 / 380	2.3 / 1.32	2750 / 3400	130 / 150	6 / 8	17.5	55 / 70
BCT-063	0.75	50	220 / 380	3.6 / 2.02	60	220 / 380	3.5 / 2.08	2750 / 3400	210 / 230	13 / 15	24.5	63 / 79
BCT-064	1.5	50	220 / 380	6.8 / 3.93	60	220 / 380	6.2 / 3.58	2750 / 3400	230 / 250	13 / 18	35	70 / 88
BCT-065	2.2	50	220 / 380	9.2 / 5.3	60	220 / 380	8.3 / 4.79	2750 / 3400	320 / 350	23 / 27	48	75 / 90
BCT-066	3.7	50	220 / 380	14.4 / 8.3	60	220 / 380	13 / 7.51	2750 / 3400	320 / 350	33 / 38	58.5	78 / 95
BCT-067	5.5	50	220 / 380	22 / 12.7	60	220 / 380	20 / 11.56	2750 / 3400	440 / 550	46 / 60	89	82 / 98
BCT-068	7.5	50	220 / 380	27 / 15.6	60	220 / 380	29 / 16.76	2750 / 3400	500 / 620	50 / 62	10.2	90 / 105
LF-75	0.1	50	220 / 380	1.0 / 0.57	60	220 / 380	0.9 / 0.52	2750 / 3400	70 / 100	5.5 / 6.5	8.1	65 / 70
LF-100	0.2	50	220 / 380	1.7 / 0.98	60	220 / 380	1.5 / 0.86	2750 / 3400	104 / 150	9.21 / 10.5	10	70 / 75
LF-200	0.2	50	220 / 380	1.7 / 0.98	60	220 / 380	1.5 / 0.86	2750 / 3400	60 / 80	6.5 / 7.8	8	60 / 65
LF-400	0.4	50	220 / 380	2.4 / 1.38	60	220 / 380	2.3 / 1.32	2750 / 3400	65 / 85	15 / 18	13	65 / 70
LF-750	0.75	50	220 / 380	3.6 / 2.02	60	220 / 380	3.5 / 2.08	2750 / 3400	120 / 190	17 / 20	14.5	68 / 72
YF-50	0.05	50	220 / 380	0.5 / 0.28	60	220 / 380	0.4 / 0.23	2750 / 3400	40 / 60	2.2 / 2.6	4.5	45 / 50
YF-75	0.1	50	220 / 380	1.0 / 0.57	60	220 / 380	0.9 / 0.52	2750 / 3400	70 / 100	5.5 / 6.5	8.2	45 / 50
YF-80	0.05	50	220 / 380	0.5 / 0.28	60	220 / 380	0.4 / 0.23	2750 / 3400	30 / 46	3.0 / 4.5	4.1	45 / 50
YF-80A	0.05	50	220 / 380	0.5 / 0.28	60	220 / 380	0.4 / 0.23	2750 / 3400	30 / 46	3.0 / 4.5	4.1	45 / 50
YF-100	0.2	50	220 / 380	1.7 / 0.98	60	220 / 380	1.5 / 0.86	2750 / 3400	104 / 150	9.0 / 10.5	10	70 / 75
LT-5	0.2	50	220 / 380	1.7 / 0.98	60	220 / 380	1.5 / 0.86	2750 / 3400	60 / 80	6.5 / 7.8	11.2	65 / 70
NT-4	0.2	50	220 / 380	1.7 / 0.98	60	220 / 380	1.5 / 0.86	2750 / 3400	150 / 220	4.5 / 5	13	72 / 78

◎各種電壓皆可訂製，訂製時請註明所需電壓。



## 性能表 TECHNICAL DATA

型號	最大出力	週波數	電壓	電流	週波數	電壓	電流	轉速	吐出壓力 風量		重量	噪音質
MODEL	RATED OUTPUT	FREQUENCY	VOLTAGE	CURRENT	FREQUENCY	VOLTAGE	CURRENT		MAXIMUM PERFORMANCE		WEIGHT	
	KW	HZ	V	A	HZ	V	A	R.P.M	MM / AQ	M3 / MIN	Kg	db
NT-5	0.2	50	220	1.7	60	220	1.5	2750	200	6	14	73
			380	0.98		380	0.86	3400	270	7		78
NT-6	0.4	50	220	2.4	60	220	2.3	2750	290	7	19	75
			380	1.38		380	1.32	3400	400	7.5		80
NT-8	0.75	50	220	3.6	60	220	3.5	2750	460	7.5	25	78
			380	2.08		380	2.02	3400	580	8		89
LS-50	0.05	50	220	0.5	60	220	0.4	2750	40	2.2	4.7	45
			380	0.28		380	0.23	3400	60	2.6		50
LS-65	0.08	50	220	0.8	60	220	0.7	2750	65	4.9	5.0	60
			380	0.46		380	0.4	3400	85	5.3		65
LS-75	0.1	50	220	1.0	60	220	0.9	2750	70	5.5	8.1	65
			380	0.57		380	0.52	3400	100	6.5		70
LS-100	0.2	50	220	1.7	60	220	1.5	2750	104	9.0	10	70
			380	0.98		380	0.86	3400	150	10.5		75
LS-125	0.4	50	220	2.6	60	220	2.3	2750	135	12	16	55
			380	1.5		380	1.3	3400	190	14		76
BH-BT	0.05	50	220	0.5	60	220	0.4	2750	40	2.2	4.5	50
			380	0.28		380	0.23	3400	60	2.5		55
BH-1BT	0.08	50	220	0.8	60	220	0.7	2750	65	4.9	5.1	60
			380	0.46		380	0.4	3400	85	5.3		65
BH-2BT	0.1	50	220	1.0	60	220	0.9	2750	70	5.5	7.2	65
			380	0.57		380	0.52	3400	100	6.5		70
BH-3BT	0.2	50	220	1.7	60	220	1.5	2750	140	4.5	10	70
			380	0.98		380	0.86	3400	190	5		75
BH-4BT	0.2	50	220	1.7	60	220	1.5	2750	150	5	11	73
			380	0.98		380	0.86	3400	220	5.5		78
BH-5BT	0.4	50	220	2.4	60	220	2.3	2750	200	6	14	75
			380	1.38		380	1.32	3400	270	7		80
HN-13BT	0.05	50	220	0.5	60	220	0.4	2750	40	2.2	4.3	50
			380	0.28		380	0.23	3400	60	2.5		60
HN-25BT	0.08	50	220	0.8	60	220	0.7	2750	65	4.9	4.4	60
			380	0.46		380	0.4	3400	85	5.3		65
HN-50BT	0.1	50	220	1.0	60	220	0.9	2750	70	5.5	6.2	65
			380	0.57		380	0.52	3400	100	6.5		70

- ◎上述資料僅供參考，如有不同以實品為主。
- ◎本公司保有設計變更之權利，恕不另行通知。
- ◎如有任何疑問請洽經銷商或本公司。
- ◎各種電壓皆可訂製，訂製時請註明所需電壓。



