

电磁离合器带轴承座 (适合同轴安装) CF20S6AA/CF21S5AA/CF22S5AA/CF2005AA/CF2010AA/CF2020AA/CF2040AA

电磁离合器、喷雾头设备电磁离合器、打包机电磁离合器 CD-F2-0.6/CD-F2-1.5/CD-F2-2.5/CD-F2-5/CD-F2-10/CD-F2-20

新型号 CDF0S6AP/CDF0S6AO/CDF0S6AN/CDF1S5AK/CDF1S5AL/CDF1S5AJ/CDF2S5AI/CDF2S5AM/CDF2S5AN

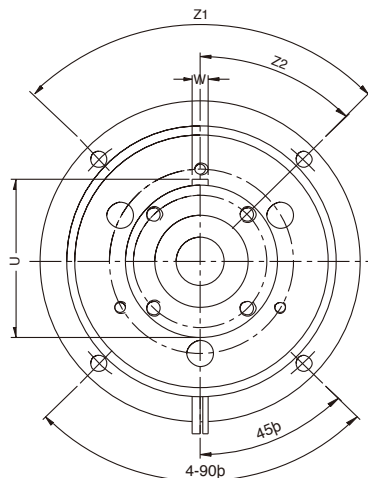
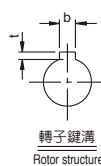
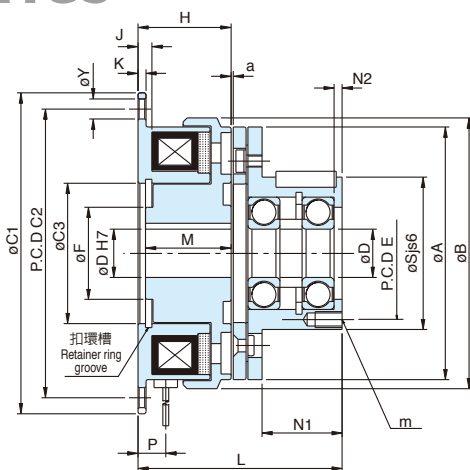
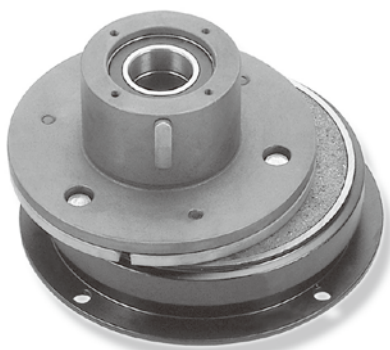
CDF2S5AL/CDF005AG/CDF005AH/CDF010AH/CDF010AG/CDF020AC/CDF020AD/CDF020AE/CDF040AC

仟位总代理 13710967244 余彦泽 <http://www.chaintail.com.cn>

乾式單板電磁離合器-法蘭固定型 Electromagnetic Power-Applied Friction Clutch - Flange Mounted

附軸承導座 with bearing mounted hub

CF2 Series



| 型號 MODEL | CF20S6AA | CF21S5AA | CF22S5AA | CF2005AA | CF2010AA | CF2020AA | CF2040AA | |
|--|-------------|--------------|--------------|--|----------|--|-------------|-------------|
| 靜摩擦轉距 Static Friction Torque [kgm](Nm) | 0.55 (5.5) | 1.1 (11) | 2.2 (22) | 4.5 (45) | 9 (90) | 17.5 (175) | 35 (350) | |
| 動摩擦轉距 Dynamic Friction Torque [kgm](Nm) | 0.5 (5.0) | 1.0 (10) | 2.0 (20) | 4 (40) | 8 (80) | 16 (160) | 32 (320) | |
| 功率 Power [24V](W) at 20°C | 11 | 15 | 20 | 25 | 35 | 45 | 60 | |
| 徑 方 向 Radius | A | 63 | 80 | 100 | 125 | 160 | 250 | |
| | B | 67.5 | 85 | 106 | 133 | 169 | 264 | |
| | C1 | 80 | 100 | 125 | 150 | 190 | 290 | |
| | C2 | 72 | 90 | 112 | 137 | 175 | 270 | |
| | C3 | 35 | 42 | 52 | 62 | 80 | 125 | |
| | D | 12 | 15 | 20 | 25 | 30 | 40 | |
| | E | 33 | 37 | 47 | 52 | 62 | 74.5 | |
| | F | 23 | 28 | 40 | 45 | 62 | 77 | |
| | S | 38 | 45 | 55 | 64 | 75 | 90 | |
| | U | 39.5 | 47 | 57 | 67 | 78 | 93.5 | |
| 軸 方 向 Shaft | Y | 5 | 6 | 7 | 7 | 9.5 | 11.5 | |
| | H | 24 | 26.5 | 30 | 33.5 | 37.5 | 44 | |
| | J | 3.5 | 4.3 | 5 | 5.5 | 6 | 7 | |
| | K | 2 | 2.5 | 3 | 3.5 | 4 | 5 | |
| | L | 51.55 | 60.3 | 70.9 | 86.8 | 104 | 124.2 | |
| | M | 22 | 24.1 | 27 | 30 | 34 | 39.15 | |
| | N1 | 20 | 25 | 30 | 40 | 50 | 60 | |
| | N2 | 2 | 2.5 | 3 | 2 | 3 | 5 | |
| | P | 7.5 | 9.5 | 8.9 | 9.5 | 9.5 | 10.5 | |
| | W | 4 | 5 | 5 | 7 | 7 | 10 | |
| | Z1 | 3-120° | | 4-90° | | 6-60° | 4-90° | 8-45° |
| | Z2 | 60° | 60° | 45° | 45° | 30° | 45° | 225° |
| | m | 3-M4*0.7P*4L | 3-M4*0.7P*6L | 4-M4*0.7P*8L | | 6-M5*0.8P*8L | 4-M6*1P*12L | 8-M6*1P*12L |
| a | 0.2 (±0.05) | | | 0.3 (^{+0.05} / _{-0.1}) | | 0.5 (⁰ / _{-0.2}) | | |
| b | 4 | 5 | 5 | 7 | 7 | 10 | 12 | |
| t | 1.8 | 2.3 | 2.3 | 3.3 | 3.3 | 3.8 | 3.8 | |
| 重量 Weight (kg) | 0.66 | 1.19 | 2.11 | 3.8 | 6.9 | 13 | 23.6 | |
| 保護素子 Protective device | 07D470K | 07D470K | | 10D680K | 14D680K | | 20D680K | |